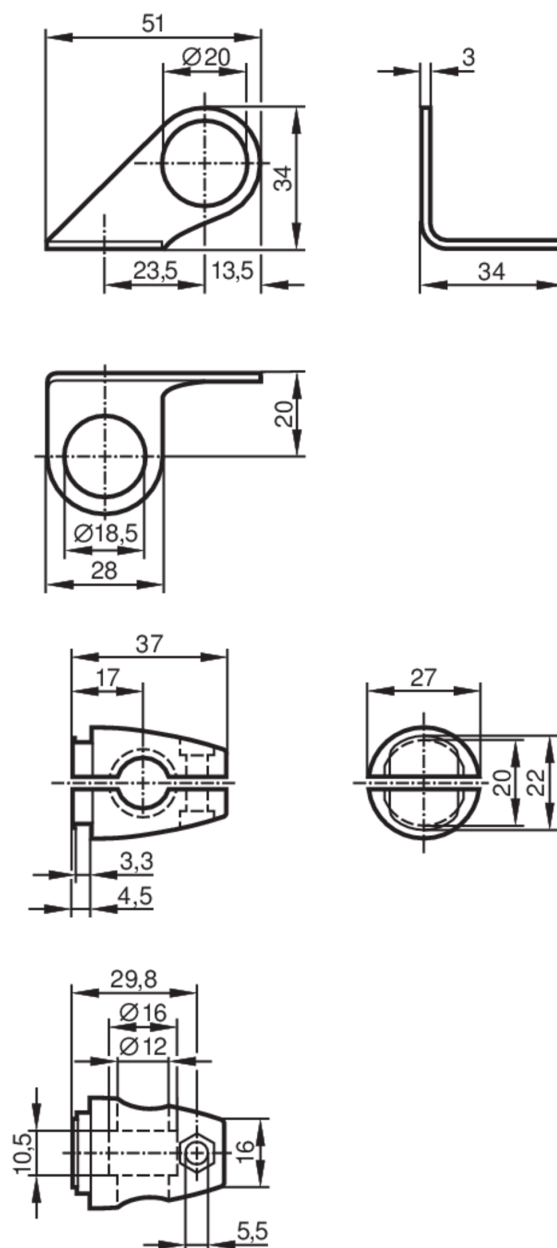


## Mounting set for position sensors

SYSTEM COMPONENT M18 BOLT



Application	
Design	clamp mounting
Mechanical data	
Weight [g]	187.5
Type of mounting	free-standing; (M10)
Dimensions [mm]	$\varnothing 18.5$
Materials	fixture: stainless steel (316Ti/1.4571); Clamp: stainless steel (1.4408)
Accessories	
Items supplied	head cap screw: 1 x M10 x 55
Remarks	
Pack quantity	1 pcs.