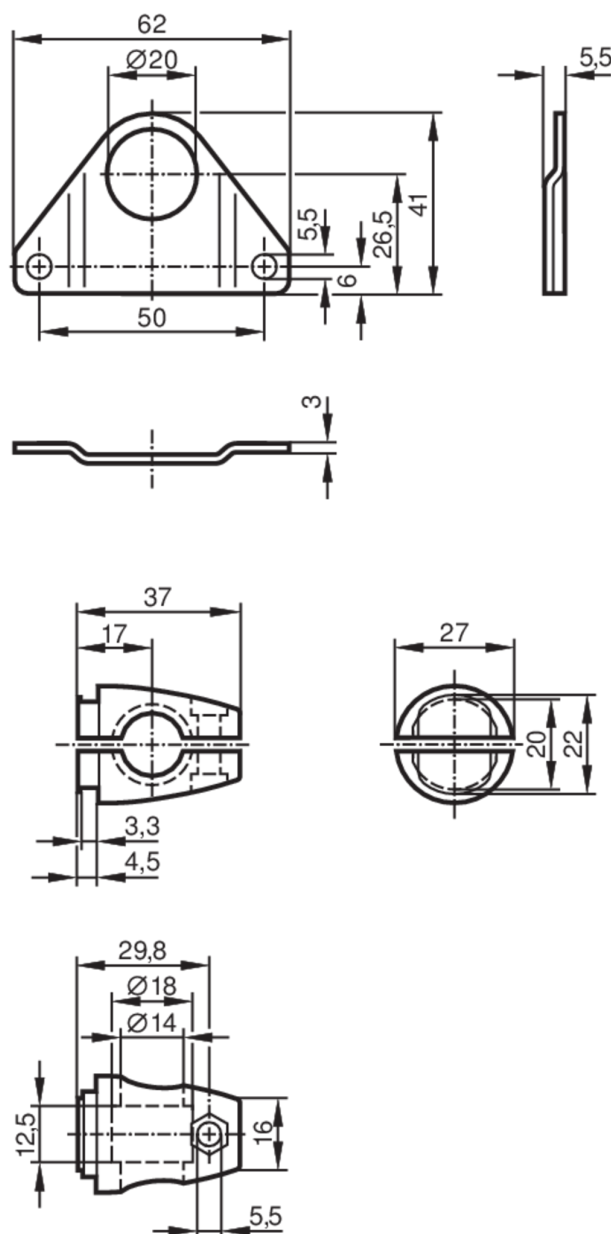


Mounting set for photoelectric sensors

MOUNTING SET OL SMALL ROD



Application

Design

clamp mounting

Mechanical data

Weight

[g]

133

Type of mounting

Mounting rod; ($\varnothing 14$ mm)

Materials

fixture: stainless steel (1.4305 / 303); Clamp: diecast zinc

Remarks

Pack quantity

1 pcs.