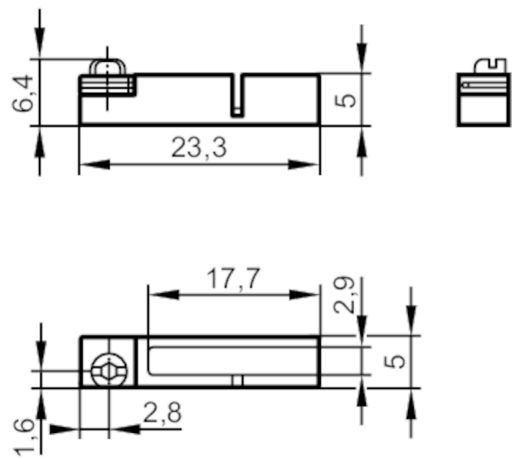


E11914



T-slot adapter for C-slot cylinder sensor

ADAPT C-SLOT IN T-SLOT SHORT



Application

Design for types, for types MKC (C-slot cylinder sensor) for installation in T-slot cylinders, MKC

Mechanical data

Weight	[g]	6.8
Type of mounting	fixing: Screw with combined slot / hexagon socket head 2.5	
Dimensions	[mm]	6.4 x 23.3 x 5
Materials	diecast zinc; Fixing element: stainless steel	

Remarks

Pack quantity 1 pcs.