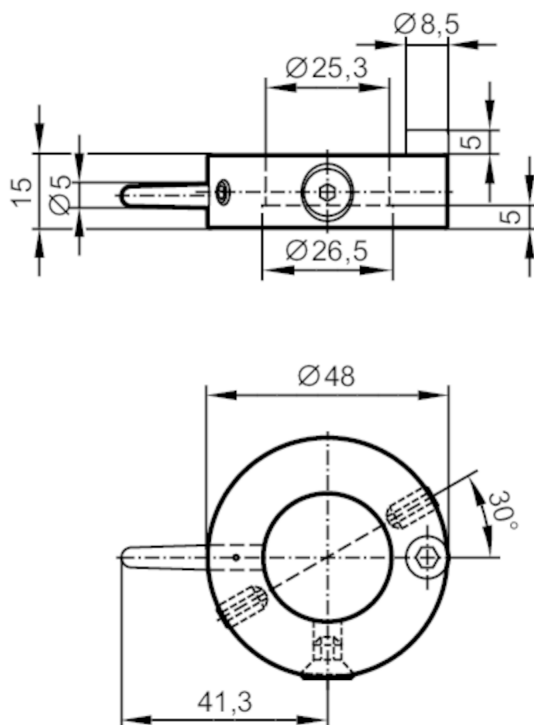


# E17013



## Target puck for valve actuators

PUCK D48 +90/-0 / W25



### Application

Design

for butterfly valve

### Mechanical data

Weight [g]

29

Target puck diameter [mm]

48

Materials

target puck: PA 6; pointer: silicone RAL 3020; counter-sunk screw: stainless steel (303/1.4305); head cap screw: stainless steel (304/1.4301); set screw: \$1\_4301; locking pin: stainless steel (304/1.4301)

Tightening torque [Nm]

2; (screws)

### Accessories

Items supplied

screws

set screws: 2 x M5 x 10, stainless steel

targets

head cap screw: 1 x M5 x 6, stainless steel

counter-sunk screw: 1 x M5 x 8, stainless steel

### Remarks

Pack quantity

1 pcs.