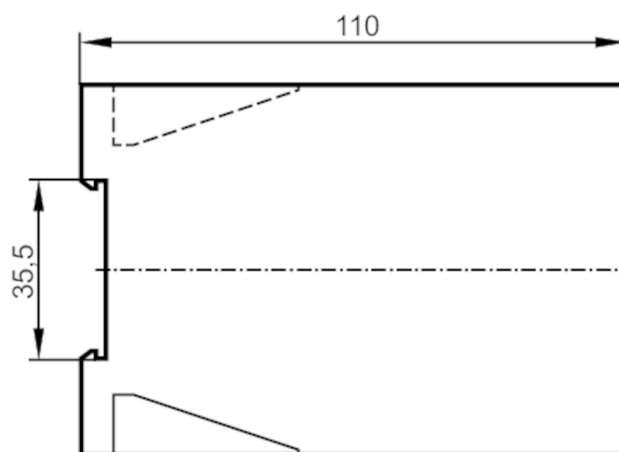
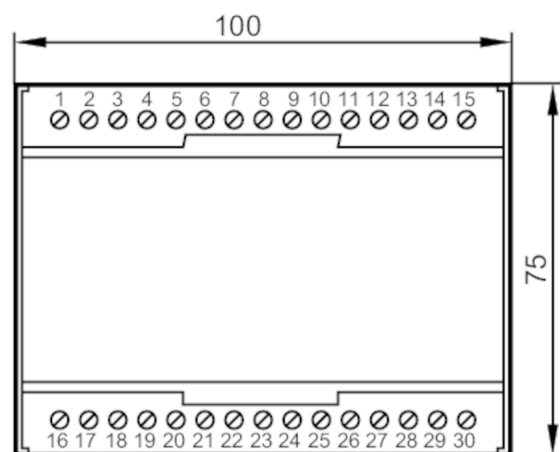




## Evaluation unit for speed monitoring

D100/230VAC/3-CHANNEL

Article no longer available - archive entry



## Product characteristics

Housing	housing for DIN rail mounting
Dimensions [mm]	75 x 100 x 110

## Application

Application	evaluation of pulse sequences with regard to reaching a minimum rotational speed in plants; centrifuges; agitators
-------------	--

## Electrical data

Nominal voltage AC [V]	< 230
Nominal voltage DC [V]	24
Nominal voltage tolerance [%]	10
Nominal voltage tolerance 2 [%]	10
Nominal frequency AC [Hz]	50...60
Auxiliary energy for sensors DC [V]	24

## Inputs / outputs

Number of inputs and outputs	Number of relay outputs: 3
------------------------------	----------------------------

## Outputs

Number of relay outputs	3
Contact rating	4 A / 250 V AC (30 V DC)

## Measuring/setting range

Setting range [Imp/min]	50...500
-------------------------	----------

## Accuracy / deviations

Hysteresis [% of Sr]	< 5
Repeatability [% of Sr]	< 5

## Operating conditions

Ambient temperature [°C]	0...55
--------------------------	--------



## Evaluation unit for speed monitoring

D100/230VAC/3-CHANNEL

Protection	IP 40	
Protection rating terminals	IP 20	
Mechanical data		
Housing	housing for DIN rail mounting	
Dimensions [mm]	75 x 100 x 110	
Materials	plastics	
Displays / operating elements		
Display	switching status	1 x LED, green
	operation	1 x LED, green
Remarks		
Remarks	*) special design	
Electrical connection		
terminals: ...2.5 mm²		
Connection		