

PN8021

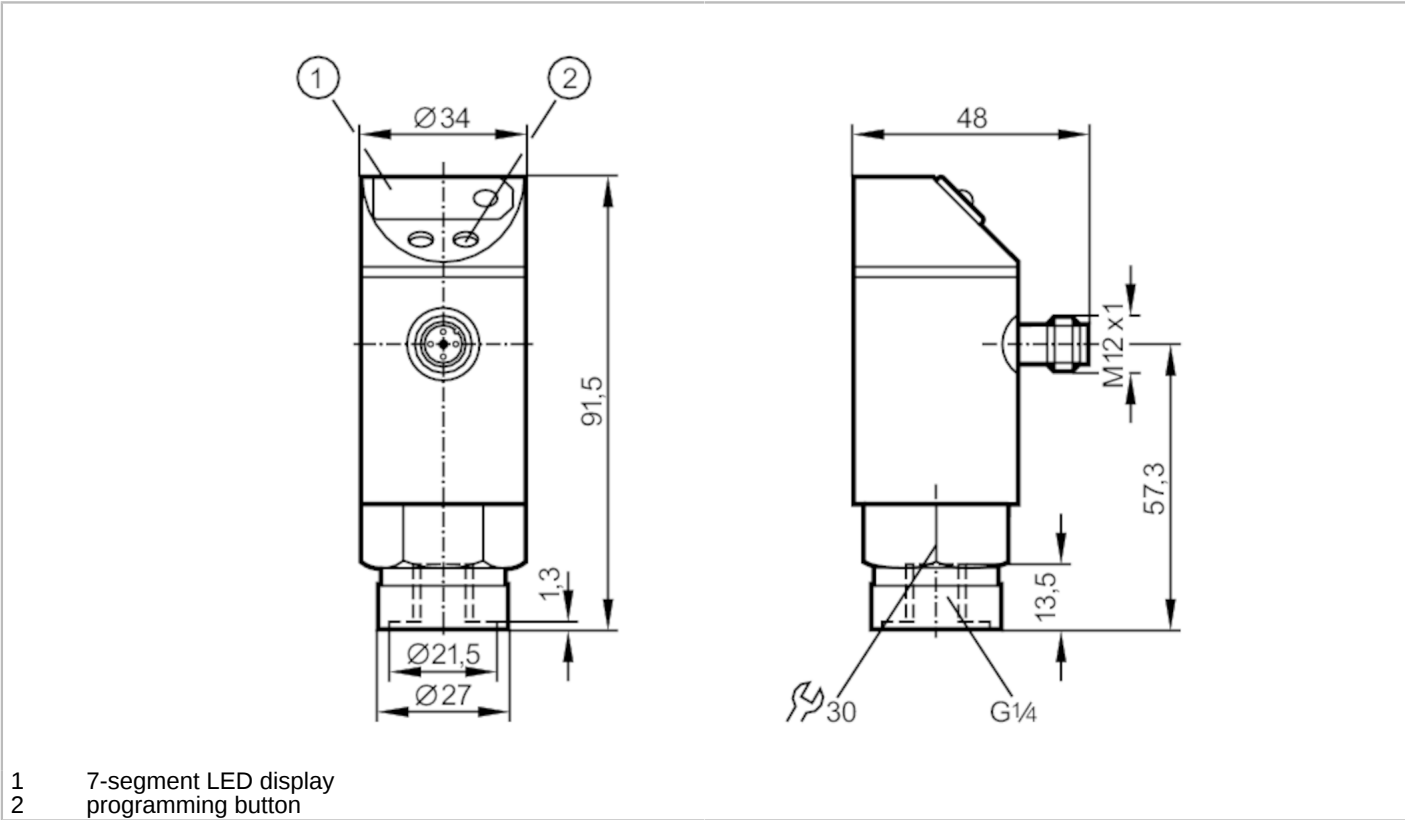


Pressure sensor with display

PN-250-SBR14-KFPKG/US/ IV

Article no longer available - archive entry

Alternative articles: PN3001
When selecting an alternative article and accessories please note that technical data may differ!



| Product characteristics | |
|------------------------------|--|
| Number of inputs and outputs | Number of digital outputs: 1; Number of analogue outputs: 1 |
| Measuring range [bar] | 0...250 |
| Process connection | threaded connection G 1/4 internal thread |
| Application | |
| Application | for industrial applications |
| Media | liquids and gases |
| Conditionally suitable for | For gaseous media the application is limited to max. 25 bar. |
| Medium temperature [°C] | -25...80 |
| Min. bursting pressure [bar] | 850 |
| Pressure rating [bar] | 400 |
| Type of pressure | relative pressure |
| Electrical data | |
| Operating voltage [V] | 20...30 DC |
| Current consumption [mA] | < 60 |
| Inputs / outputs | |
| Number of inputs and outputs | Number of digital outputs: 1; Number of analogue outputs: 1 |



Pressure sensor with display

PN-250-SBR14-KFPKG/US/ IV

| Outputs | | | | | | | | | |
|---|---|----|----|----|-------------------|----|-----|-----|--|
| Total number of outputs | 2 | | | | | | | | |
| Output signal | switching signal; analogue signal; (configurable) | | | | | | | | |
| Electrical design | PNP | | | | | | | | |
| Number of digital outputs | 1 | | | | | | | | |
| Max. voltage drop switching output DC [V] | 2 | | | | | | | | |
| Permanent current rating of switching output DC [mA] | 250 | | | | | | | | |
| Number of analogue outputs | 1 | | | | | | | | |
| Analogue current output [mA] | 4...20 | | | | | | | | |
| Max. load [Ω] | 500 | | | | | | | | |
| Measuring/setting range | | | | | | | | | |
| Measuring range [bar] | 0...250 | | | | | | | | |
| Set point SP [bar] | 12.5...250 | | | | | | | | |
| Reset point rP [bar] | 7.5...245 | | | | | | | | |
| In steps of [bar] | 2.5 | | | | | | | | |
| Accuracy / deviations | | | | | | | | | |
| Switch point accuracy [% of the final value] | < ± 2,0 | | | | | | | | |
| Repeatability [% of the final value] | < ± 0,25; (with temperature fluctuations < 10 K) | | | | | | | | |
| Characteristics deviation [% of the final value] | < ± 2,0 | | | | | | | | |
| Temperature drift per 10 K | < ± 0.3 | | | | | | | | |
| Response times | | | | | | | | | |
| Switching frequency for a given set response time of one output | Response[ms] time (dAP) | 15 | 20 | 30 | 50 | 90 | 170 | 330 | |
| | Switching [Hz] frequency | 50 | 35 | 30 | 20 | 15 | 9 | 5 | |
| Response time [ms] | at rectangular pressure characteristic; switch point (SPx) = 70 %; reset point (rPx) = 30 % | | | | | | | | |
| Delay time programmable dS, dr [s] | 0, 0,2, 0,4,...3 | | | | | | | | |
| Software / programming | | | | | | | | | |
| Adjustment of the switch point | programming button | | | | | | | | |
| Operating conditions | | | | | | | | | |
| Ambient temperature [°C] | -25...80 | | | | | | | | |
| Storage temperature [°C] | -40...100 | | | | | | | | |
| Protection | IP 67 | | | | | | | | |
| Tests / approvals | | | | | | | | | |
| EMC | IEC 801/2 ESD | | | | 4 kV CD / 8 kV AD | | | | |
| | IEC 801/3 HF | | | | 10 V/m | | | | |
| | IEC 801/4 Burst | | | | 2 kV | | | | |

PN8021



Pressure sensor with display

PN-250-SBR14-KFPKG/US/ /V

| Mechanical data | | |
|-------------------------------|---|-----------------------|
| Materials | brass nickel-plated; PBT; PC; PA | |
| Materials (wetted parts) | brass nickel-plated; ceramics; FKM; NBR; EPDM/X | |
| Min. pressure cycles | 100 million | |
| Process connection | threaded connection G 1/4 internal thread | |
| Displays / operating elements | | |
| Display | switching status | LED, red |
| | function display | 7-segment LED display |
| | measured values | 7-segment LED display |
| Remarks | | |
| Pack quantity | 1 pcs. | |

Electrical connection

Connector: 1 x M12; coding: A

