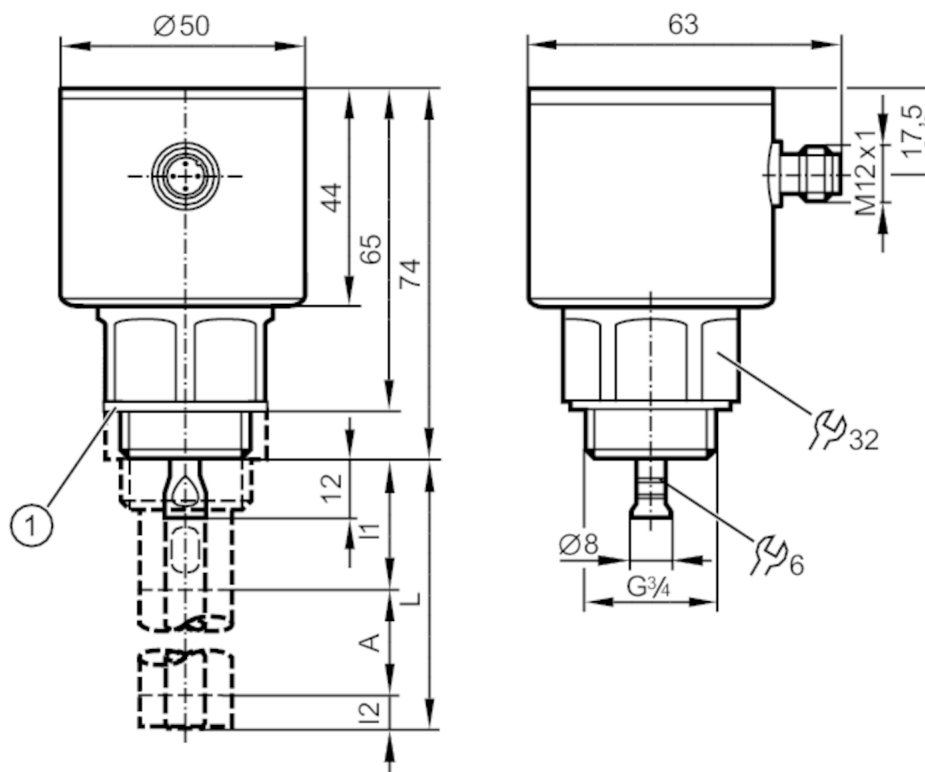


## Continuous level sensor (guided wave radar)

LR0300B--BR34A1DKG/US



- 1 Sealing  
A active range  
I1 / I2 inactive ranges



### Product characteristics

Number of inputs and outputs	Number of analogue outputs: 1
Factory setting	hydrous media; probe length L = 300 mm
Probe length L [mm]	100...1600
Process connection	G 3/4 external thread

### Application

Special feature	Gold-plated contacts
Media	hydrous coolants; oils; oil-based media; water; media similar to water
Dielectric constant of the medium	$\geq 2$ ; (for media with a dielectric constant of 2...20 (e.g. oils), a coaxial pipe is needed for operation)
Conditionally suitable for	See the operating instructions, chapter "Function and features".
Medium temperature [°C]	0...80; (90 < 1 h)
Tank pressure [bar]	-1...16

### Electrical data

Operating voltage [V]	18...30 DC
Current consumption [mA]	< 80
Protection class	III
Reverse polarity protection	yes
Power-on delay time [s]	< 3



## Continuous level sensor (guided wave radar)

LR0300B--BR34A1DKG/US

Measuring principle	guided wave radar	
Inputs / outputs		
Number of inputs and outputs	Number of analogue outputs: 1	
Outputs		
Total number of outputs	1	
Output signal	analogue signal; IO-Link	
Electrical design	PNP	
Number of analogue outputs	1	
Analogue current output [mA]	4...20	
Max. load [Ω]	500	
Min. load resistance [Ω]	2000	
Overload protection	yes	
Measuring/setting range		
Factory setting	hydrous media; probe length L = 300 mm	
Probe length L [mm]	100...1600	
Active range A [mm]	L-40 (L-60); (when set to oil and oil based media)	
Inactive range I1 / I2 [mm]	30 / 10 (30); (when set to oil and oil based media)	
Accuracy / deviations		
Repeatability [mm]	± 5	
Switch point accuracy [mm]	± (15 + 0,5 % ); (% of the final value of the measuring range: L - 30 mm)	
Offset error [mm]	10	
Measuring sensitivity	16 mA ÷ MEW 10 V ÷ MEW	
Resolution [mm]	0,5	
Zero signal (voltage) [V]	0...0.2	
Zero signal (current) [mA]	3.95...4.0	
Full signal (voltage) [V]	10...10.1	
Full signal (current) [mA]	20...20.2	
Characteristics deviation	± 10	
Interfaces		
Communication interface	IO-Link	
Transmission type	COM2 (38,4 kBaud)	
IO-Link revision	1.1	
SDCI standard	IEC 61131-9 CDV	
Profiles	no profile	
SIO mode	yes	
Required master port type	A	
Process data analogue	1	
Process data binary	1	
Min. process cycle time [ms]	2.3	
Supported DeviceIDs	Type of operation	DeviceID
	default	684
Operating conditions		
Ambient temperature [°C]	0...60	

LX0024



Continuous level sensor (guided wave radar)

LR0300B--BR34A1DKG/US

Storage temperature	[°C]	-25...80
Protection		IP 68; IP 69K

Tests / approvals

EMC	EN 61000-6-2	
	EN 61000-6-3	in a metal tank
	EN 61000-6-4	in a plastic tank
Shock resistance	DIN IEC 68-2-27	50 g (11 ms)
Vibration resistance	DIN IEC 68-2-6	5 g (10...2000 Hz)
MTTF	[years]	239

Mechanical data

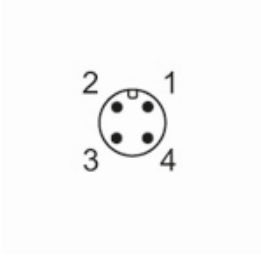
Weight	[g]	430
Materials		stainless steel (304/1.4301); stainless steel (316L/1.4404); FKM; PEI
Materials (wetted parts)		stainless steel (303/1.4305); probe connection: stainless steel (316L/1.4435); PTFE; FKM; Sealing: NBR-PPTA 20
Process connection		G 3/4 external thread

Remarks

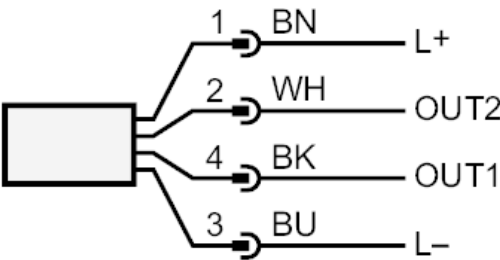
Pack quantity		1 pcs.
---------------	--	--------

Electrical connection

Connector: 1 x M12; coding: A; Contacts: gold-plated



Connection



OUT1: IO-Link  
OUT2: analogue output  
colours to DIN EN 60947-5-2  
Core colours :  
BK = black  
BN = brown  
BU = blue  
WH = white