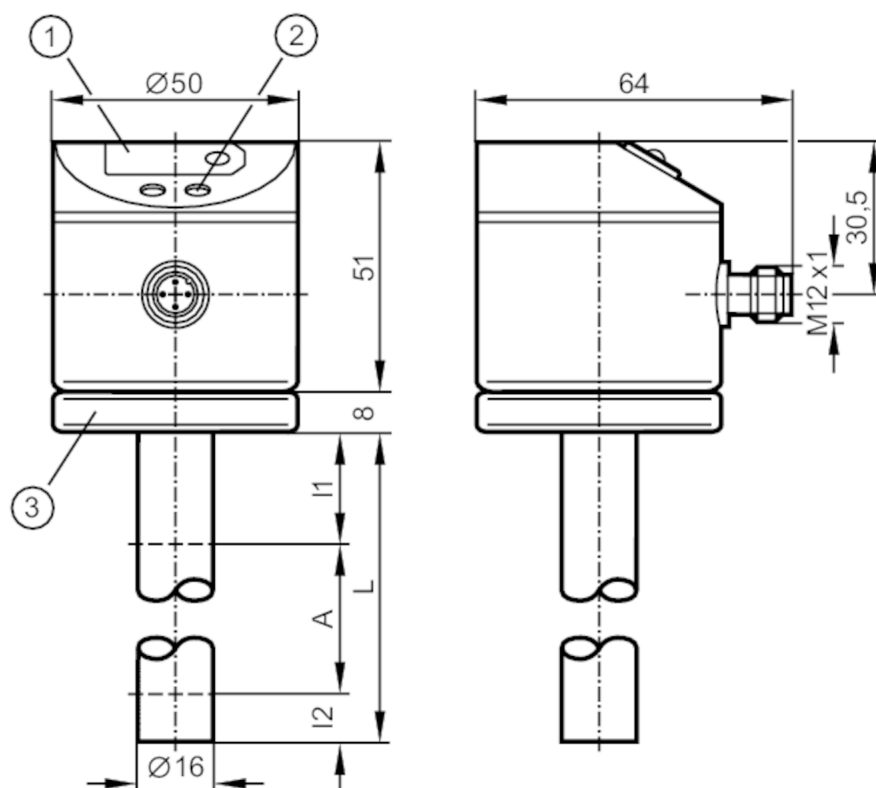




Continuous level sensor

LK0728A-A-00KQNG/US

Article no longer available - archive entry



- 1 7-segment LED display
 2 programming buttons
 3 housing connection with cable lug for cable 1.5...2.5 mm²



Product characteristics

Number of inputs and outputs	Number of digital outputs: 2
Probe length L [mm]	728

Application

Special feature	Gold-plated contacts
Media	hydrous coolants; mineral oils (dielectric constant < 3); water; media similar to water
Dielectric constant of the medium	> 2
Cannot be used for	media with separation layers (oil / water; oil / metal layer); acids and alkalis
Medium temperature [°C]	0...65; (medium temperature for oils; medium temperature for coolant emulsions, water and hydrous media)
Tank pressure [bar]	0.5; (when mounting with mounting accessories: E43001 - E43007, E43019)

Electrical data

Operating voltage [V]	12...30 DC
Current consumption [mA]	< 80
Protection class	III
Reverse polarity protection	yes
Measuring principle	capacitive



Continuous level sensor

LK0728A-A-00KQNK/US

Inputs / outputs		
Number of inputs and outputs		Number of digital outputs: 2
Outputs		
Total number of outputs		2
Output signal		switching signal
Electrical design		NPN
Number of digital outputs		2
Output function		normally open / normally closed; (parameterisable)
Max. voltage drop switching output DC [V]		2.5
Permanent current rating of switching output DC [mA]		200
Short-circuit protection		yes
Type of short-circuit protection		pulsed
Overload protection		yes
Measuring/setting range		
Probe length L [mm]		728
Active range A [mm]		585
Inactive range I1 / I2 [mm]		102 / 40
Setting range		
Set point SP [mm]		60...610
Reset point rP [mm]		50...600
In steps of [mm]		10
Hysteresis [mm]		10
Accuracy / deviations		
Measuring error [% of the final value]		± 5
Repeatability		± 2
Software / programming		
Adjustment of the switch point		programming button
Operating conditions		
Ambient temperature [°C]		0...60
Storage temperature [°C]		-25...80
Protection		IP 67
Tests / approvals		
EMC	EN 61000-4-2 ESD	4 kV CD / 8 kV AD
	EN 61000-4-3 HF radiated	10 V/m
	EN 61000-4-4 Burst	2 kV
	EN 61000-4-5 Surge	500 V / 1 kV
	EN 61000-4-6 HF conducted	10 V
Shock resistance		12 g
Vibration resistance		2.5 g

LK0024



Continuous level sensor

LK0728A-A-00KQNKG/US

Mechanical data		
Dimensions	[mm]	Ø 16
Materials	EPDM/X; FKM; brass Optalloy-plated; NBR; PA; PBT; PC; PP	
Materials (wetted parts)	PP	
Displays / operating elements		
Display	switching status	2 x LED, red
	function display	7-segment LED display
	measured values	7-segment LED display
Remarks		
Remarks	For water and hydrous media with temperatures > 35 °C install the unit into a climatic tube.	
Pack quantity	1 pcs.	

Electrical connection

Connector: 1 x M12; coding: A; Contacts: gold-plated



Connection

