

KD5041



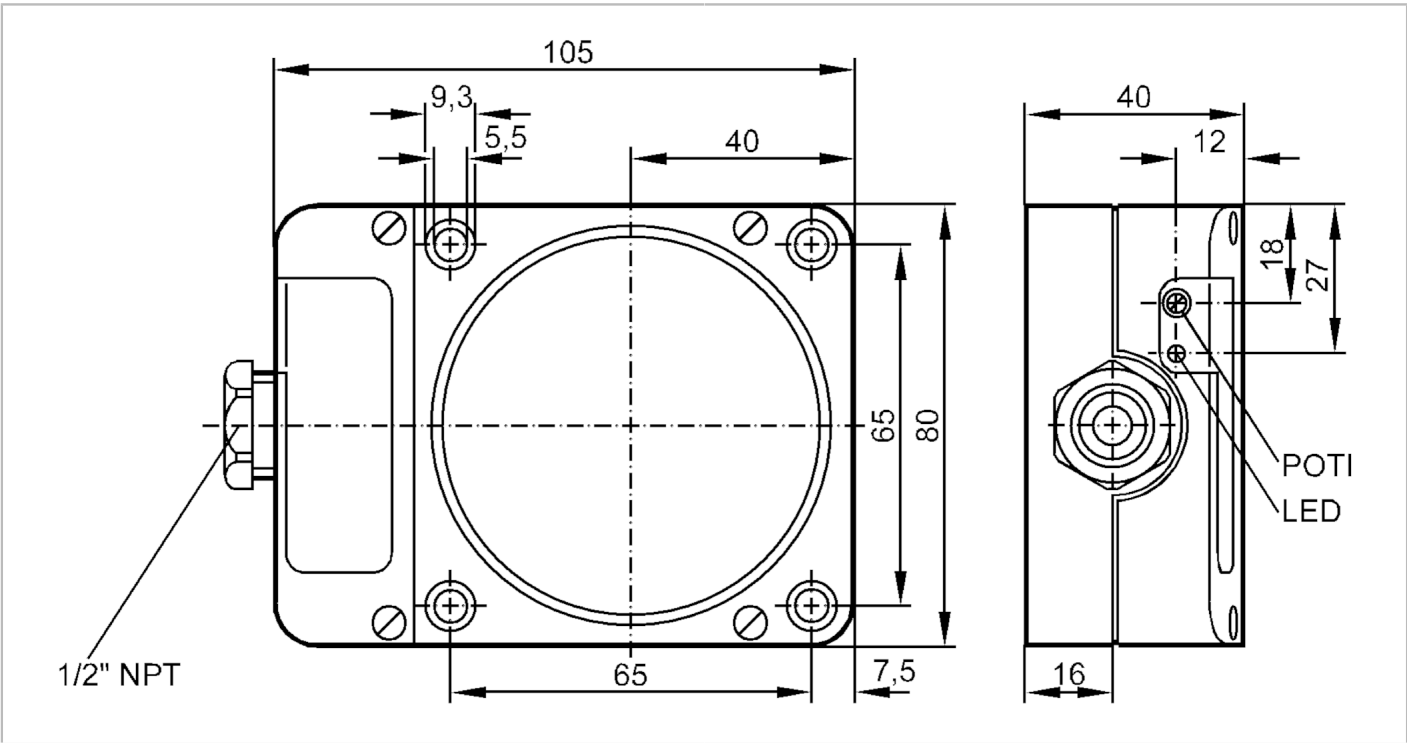
Capacitive sensor

KDE3060-FPKG/NI/NPT

Article no longer available - archive entry

Alternative articles: KD5018

When selecting an alternative article and accessories please note that technical data may differ!



Product characteristics

Electrical design	PNP
Output function	normally open / normally closed; (selectable)
Sensing range [mm]	60
Housing	rectangular

Electrical data

Operating voltage [V]	10...36 DC
Current consumption [mA]	< 15
Protection class	II
Reverse polarity protection	yes

Outputs

Electrical design	PNP
Output function	normally open / normally closed; (selectable)
Max. voltage drop switching output DC [V]	2.5
Permanent current rating of switching output DC [mA]	250
Switching frequency DC [Hz]	10
Short-circuit proof	yes
Overload protection	yes

KD5041



Capacitive sensor

KDE3060-FPKG/NI/NPT

Detection zone		
Sensing range	[mm]	60
Real sensing range Sr	[mm]	60 ± 10 %
Operating distance	[mm]	0...48.6
Accuracy / deviations		
Correction factor		glass: 0.4 / water: 1 / ceramics: 0.2 / PVC: 0.2
Hysteresis	[% of Sr]	1...15
Switch point drift	[% of Sr]	-15...15
Operating conditions		
Ambient temperature	[°C]	-25...80
Protection		IP 65
Increased immunity		yes; (increased immunity to conducted radio frequency interference)
Tests / approvals		
EMC	IEC 60947-5-2	
Mechanical data		
Weight	[g]	291
Housing		rectangular
Mounting		non-flush mountable
Materials		PPE modified
Displays / operating elements		
Display	switching status	1 x LED, red
Accessories		
Items supplied	screwdriver: 1	
Remarks		
Pack quantity	1 pcs.	
Electrical connection		
terminals: ...2.5 mm²; Cable sheath: Ø 7...13 mm		
Connection		

