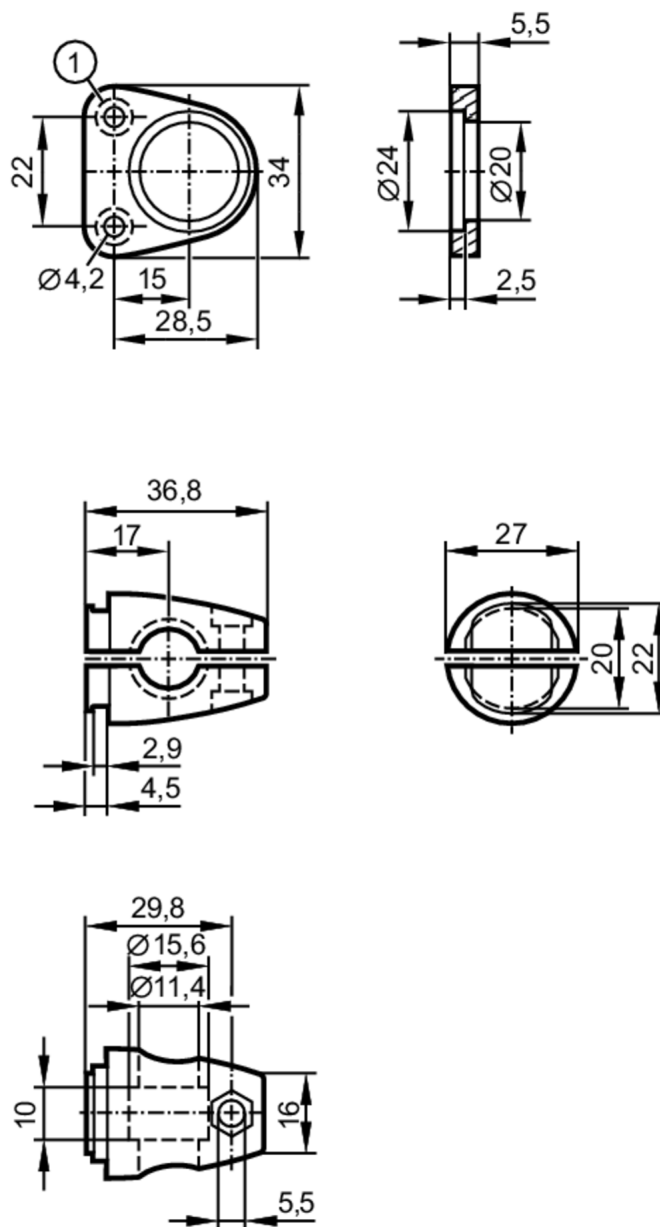


## Mounting set

Mounting Set Compact Cam



1 blind hole Ø 7.4 x 4.9 mm

### Application

Design

clamp mounting O2D5, for types O2I5

### Mechanical data

Weight

[g]

112.5

Type of mounting

Mounting rod; (Ø 12 mm)

Materials

Clamps: stainless steel (316L/1.4404); cylinder screws: hot galvanised M4 x 8; mounting bracket: stainless steel (1.4301 / 304)

# E2D500



## Mounting set

Mounting Set Compact Cam

Accessories	
Items supplied	Clamps: 2
	cylinder screws: 2 x M4 x 8
	mounting bracket: 1
	Hexagon nut: 1 x M5
	head cap screw: 1 x M5 x 16
Remarks	
Pack quantity	1 pcs.