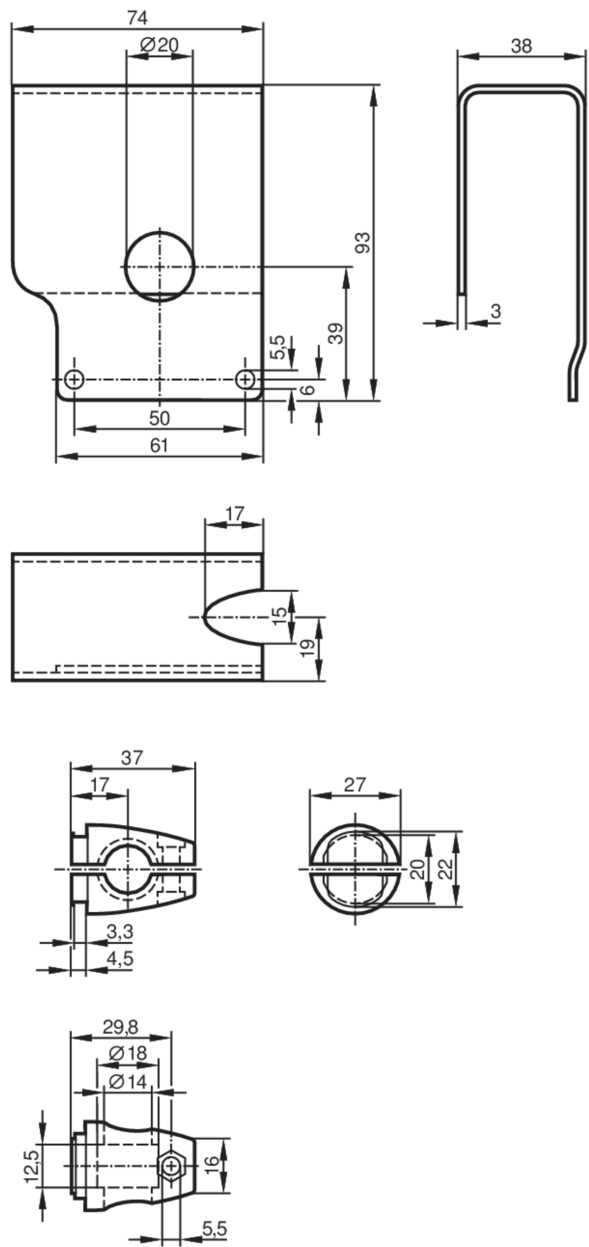




Mounting set with protective cover for photoelectric sensors

MOUNTING SET PROTECTIVE OL



Application	
Design	clamp mounting, with protective cover
Mechanical data	
Weight [g]	555
Type of mounting	free-standing; (M12)
Materials	fixture: stainless steel (303/1.4305); Clamp: diecast zinc
Accessories	
Items supplied	screw: 1 x M12 x 120
Remarks	
Pack quantity	1 pcs.