

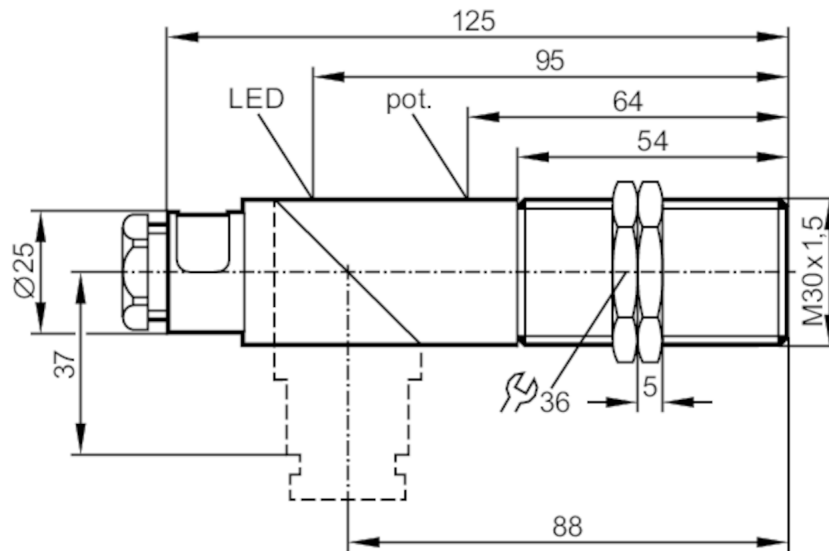
KI5205

Capacitive sensor

KIE3015-FNKG/NI



Article no longer available - archive entry



Product characteristics

Electrical design		NPN
Output function		normally open / normally closed; (selectable)
Sensing range	[mm]	3...15
Housing		threaded type
Dimensions	[mm]	M30 x 1.5 / L = 125

Electrical data

Operating voltage	[V]	10...36 DC
Current consumption	[mA]	13; (24 V)
Protection class		II
Reverse polarity protection		yes

Outputs

Electrical design		NPN
Output function		normally open / normally closed; (selectable)
Max. voltage drop switching output DC	[V]	2.5
Permanent current rating of switching output DC	[mA]	250
Switching frequency DC	[Hz]	40
Short-circuit protection		yes
Type of short-circuit protection		pulsed
Overload protection		yes

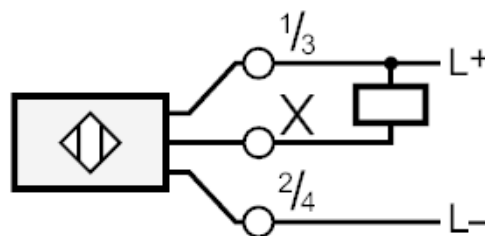
KI5205



Capacitive sensor

KIE3015-FNKG/NI

Detection zone		
Sensing range [mm]		3...15
Sensing range adjustable		yes
Factory setting sensing range [mm]		15
Operating conditions		
Ambient temperature [°C]		-25...70
Protection		IP 65
Increased immunity		yes; (increased immunity to conducted radio frequency interference)
Tests / approvals		
EMC	EN 60947-5-2	
Mechanical data		
Housing		threaded type
Mounting		non-flush mountable
Dimensions [mm]		M30 x 1.5 / L = 125
Thread designation		M30 x 1.5
Materials		PBT; end cap: PC
Displays / operating elements		
Display	switching status	1 x LED, yellow
Accessories		
Accessories (supplied)		lock nuts: 2 screwdriver: 1
Remarks		
Pack quantity		1 pcs.
Electrical connection		
terminals: ...2.5 mm ² ; Cable sheath: Ø 7...13 mm; Cable gland: M20 X 1.5		
Connection		



Article no longer available - archive entry