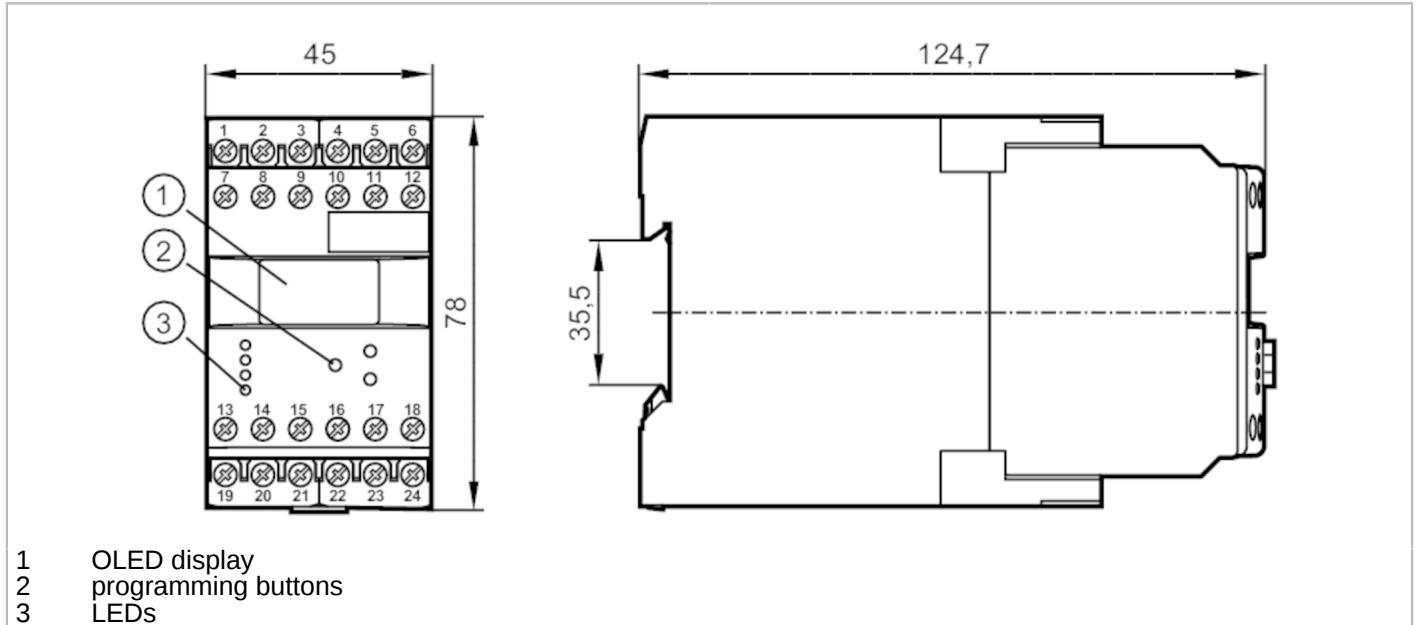


DL2503



Evaluation unit for monitoring analogue standard signals

MONITOR/AL-3 /110-240VAC/DC



- 1 OLED display
- 2 programming buttons
- 3 LEDs



Product characteristics		
Housing	housing for DIN rail mounting	
Dimensions [mm]	78 x 45 x 124.7	
Application		
Application	2-channel threshold relay for analogue standard signals	
Electrical data		
Nominal voltage AC [V]	110...240	
Nominal voltage DC [V]	27	
Nominal voltage tolerance [%]	< 10	
Nominal voltage tolerance 2 [%]	20...10	
Nominal frequency AC [Hz]	50...60	
Power consumption [W]	5	
Auxiliary energy for sensors DC [V]	19.6...27.7; (SELV, ≤ 150 mA)	
Operating conditions		
Ambient temperature [°C]	-40...60	
Storage temperature [°C]	-40...85	
Max. relative air humidity [%]	80; (40 °C: 50 %)	
Protection	IP 50	
Protection rating terminals	IP 20	
Tests / approvals		
EMC	EN 61010	2011
	EMV 89/336/EWG	
	EN 61000-6-2	2005
	EN 61000-6-4	2007



Evaluation unit for monitoring analogue standard signals

MONITOR/AL-3 /110-240VAC/DC

Mechanical data	
Weight [g]	375
Housing	housing for DIN rail mounting
Dimensions [mm]	78 x 45 x 124.7
Materials	plastics

Displays / operating elements		
Display		OLED display, 128 x 64 pixels luminous
	switching status	LED, green

Electrical connection	
dual-chamber terminals: 2 x ...2.5 mm ² ; AWG 14	

1	24 V DC supply voltage (L-)
2	24 V DC supply voltage (L+)
3	supply transistor outputs (L+)
4	analogue input GND
5	analogue input In1 (0/4...20 mA)
6	analogue input In2 (0/4...20 mA)
7	AC supply voltage (L)
8	AC supply voltage (N)
9	not used
10	24 V DC Sensor supply (L+)
11	24 V DC Sensor supply (L-)
12	transistor output signal monitoring pnp
13	relay Out1 common
14	relay Out1 normally open
15	relay Out1 normally closed
16	transistor output Out1 pnp
17	release 1/2 pnp (+ 24 V DC)
18	reset 1/2 pnp (+ 24 V DC)
19	relay Out2 common
20	relay Out2 normally open
21	relay Out2 normally closed
22	analogue output Out3 0/4...20 mA (+)
23	analogue output Out3 0/4...20 mA (-)
24	transistor output Out2 pnp