

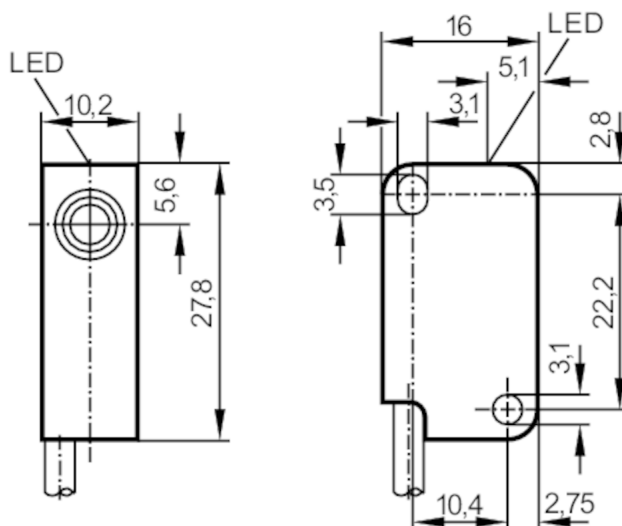
IS5017



Inductive sensor

IS-3002-BPOG/0,065M

Article no longer available - archive entry



Product characteristics

Electrical design		PNP
Output function		normally open
Sensing range	[mm]	2
Housing		rectangular
Dimensions	[mm]	28 x 10 x 16

Electrical data

Operating voltage	[V]	10...36 DC; ("supply class 2" to cULus)
Current consumption	[mA]	15; (24 V)
Protection class		III
Reverse polarity protection		no

Outputs

Electrical design		PNP
Output function		normally open
Max. voltage drop switching output DC	[V]	1
Permanent current rating of switching output DC	[mA]	200
Switching frequency DC	[Hz]	800
Short-circuit protection		no
Overload protection		no

Detection zone

Sensing range	[mm]	2
Real sensing range S_r	[mm]	$2 \pm 10\%$
Operating distance	[mm]	0...1.6

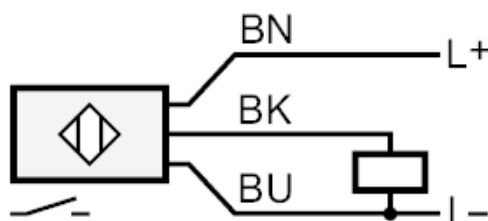
IS5017



Inductive sensor

IS-3002-BPOG/0,065M

Accuracy / deviations		
Correction factor	steel: 1 / stainless steel: 0.7 / brass: 0.4 / aluminium: 0.3 / copper: 0.2	
Hysteresis [% of Sr]	1...15	
Switch point drift [% of Sr]	-10...10	
Operating conditions		
Ambient temperature [°C]	-25...80	
Protection	IP 67	
Tests / approvals		
EMC	EN 60947-5-2	
	EN 55011	class B
MTTF [years]	3044	
Mechanical data		
Housing	rectangular	
Mounting	flush mountable	
Dimensions [mm]	28 x 10 x 16	
Materials	PBT	
Tightening torque [Nm]	< 0.5; (with washer)	
Displays / operating elements		
Display	switching status	1 x LED, yellow
Remarks		
Pack quantity	1 pcs.	
Electrical connection		
Cable: 0.065 m, PVC; 3 x 0.14 mm ²		
Connection		



Core colours :

- BN = brown
- BU = blue
- BK = black

Article no longer available - archive entry