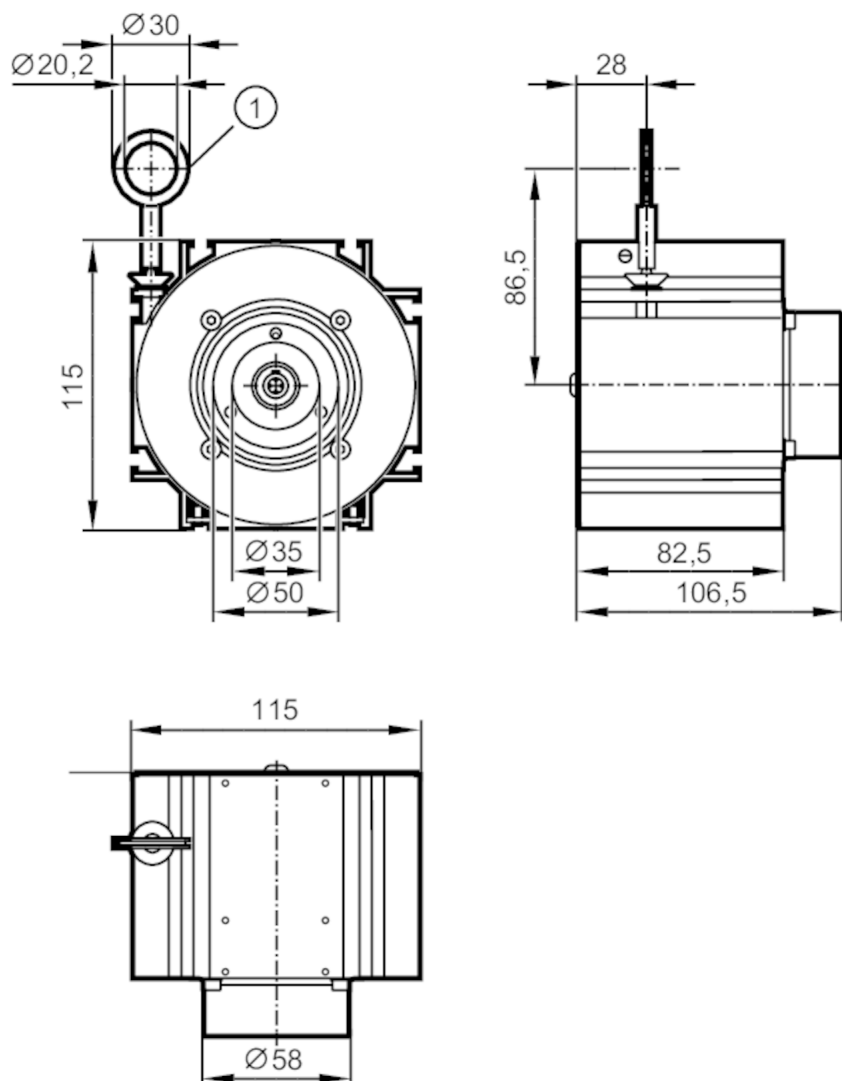


## Draw-wire mechanism for encoders

DRAW WIRE 5000



1 eyelet 20.2 mm Ø

## Product characteristics

Shaft design	solid shaft	
Shaft diameter [mm]	6	

## Application

Design	for encoders with 58 mm synchro flange and 6 mm solid shaft	
--------	---	--

## Accuracy / deviations

Accuracy	± 0.02 % FSO	
Repeatability	± 0,002 % FSO	

## Operating conditions

Ambient temperature [°C]	-20...80	
Storage temperature [°C]	-40...80	
Storage humidity [%]	5...95; (non condensing)	

## Tests / approvals

Shock resistance	IEC628-2-27	50 g / 10 ms
Vibration resistance	IEC68-2-6	20 g / 20..200 Hz

## Draw-wire mechanism for encoders

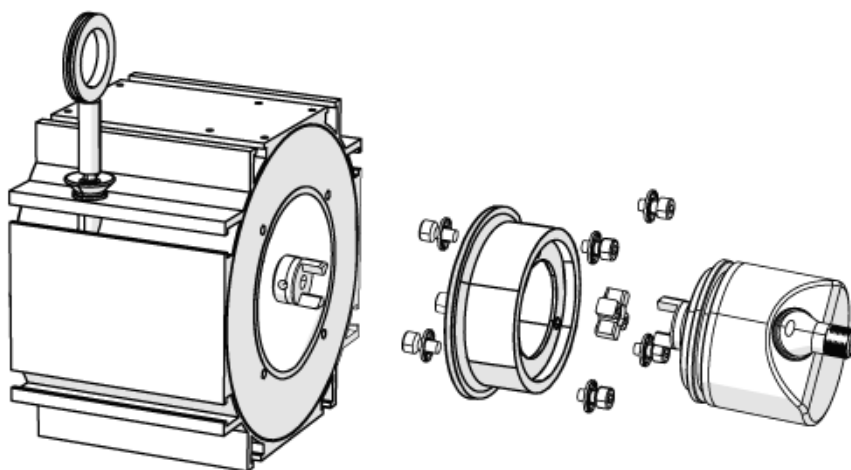
DRAW WIRE 5000

Mechanical data			
Weight	[g]	1842.9	
Top flange diameter	[mm]	58	
Materials		housing: aluminium anodised; wire: stainless steel polyamide coated	
Shaft design		solid shaft	
Shaft diameter	[mm]	6	
Max. measuring length	[mm]	5000	
Wire drum circumference	[mm]	315	
Wire diameter	[mm]	1	
Wire connection		20,2; (eyelet)	
Wire properties	max. speed of wire displacement	[m /s]	2
	max. wire acceleration	[g]	5
	max. extension force	[N]	16
	min. retraction force	[N]	4
Fixing flange		synchro-flange	

## Remarks

Pack quantity	1 pcs.
---------------	--------

## Diagrams and graphs



Installation instruction