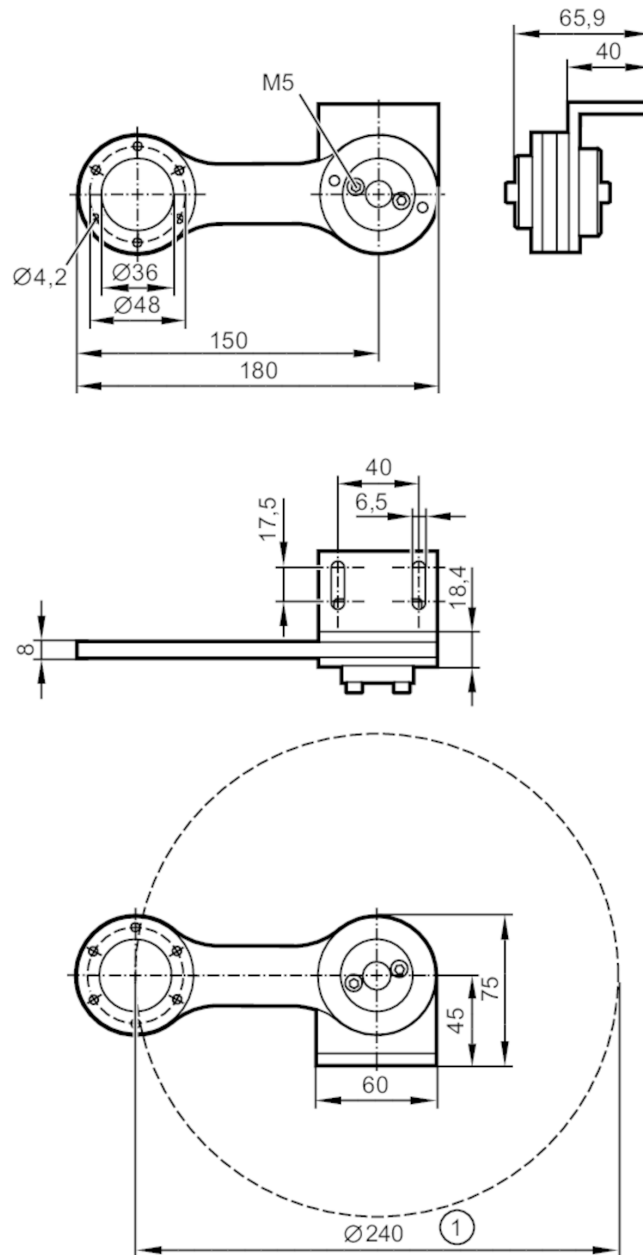


## Spring arm for encoders

ENCODER SPRING ARM



1 operating range

### Application

Design for encoder with clamp flange

### Operating conditions

Ambient temperature [°C] -30...60

### Mechanical data

Weight [g]	527.1
Installation instruction	can be mounted from both sides
Dimensions [mm]	180 x 65.9 x 75
External diameter [mm]	300
Materials	aluminium anodised; Spring: stainless steel (301/1.4310)
Tightening torque [Nm]	4.3

# E61438



## Spring arm for encoders

ENCODER SPRING ARM

Max. angular displacement	[°]	45
Activation force	[N]	10...30

### Remarks

Remarks	With scale
Pack quantity	1 pcs.

### Diagrams and graphs

Installation instruction

