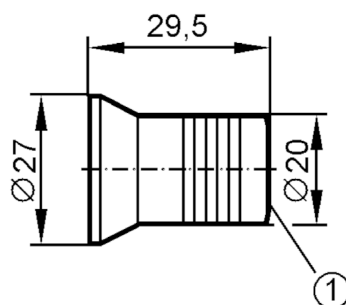


Welding adapter for process sensors

Einschweißmuffe/St52/SA

Article no longer available - archive entry



1 internal thread M16 x 1.5

Application

Design	for flow monitors M16 x 1.5 (SAM)
--------	-----------------------------------

Tests / approvals

Pressure Equipment Directive	A possible classification to PED depends on the application and has to be carried out by the user / operator.
------------------------------	---

Safety instructions	The compatibility between medium and product material has to be checked in all applications.
---------------------	--

Mechanical data

Dimensions	[mm]	M16
Thread designation		M16
Materials		steel (1.0037 / S235JR)

Remarks

Pack quantity	1 pcs.
---------------	--------