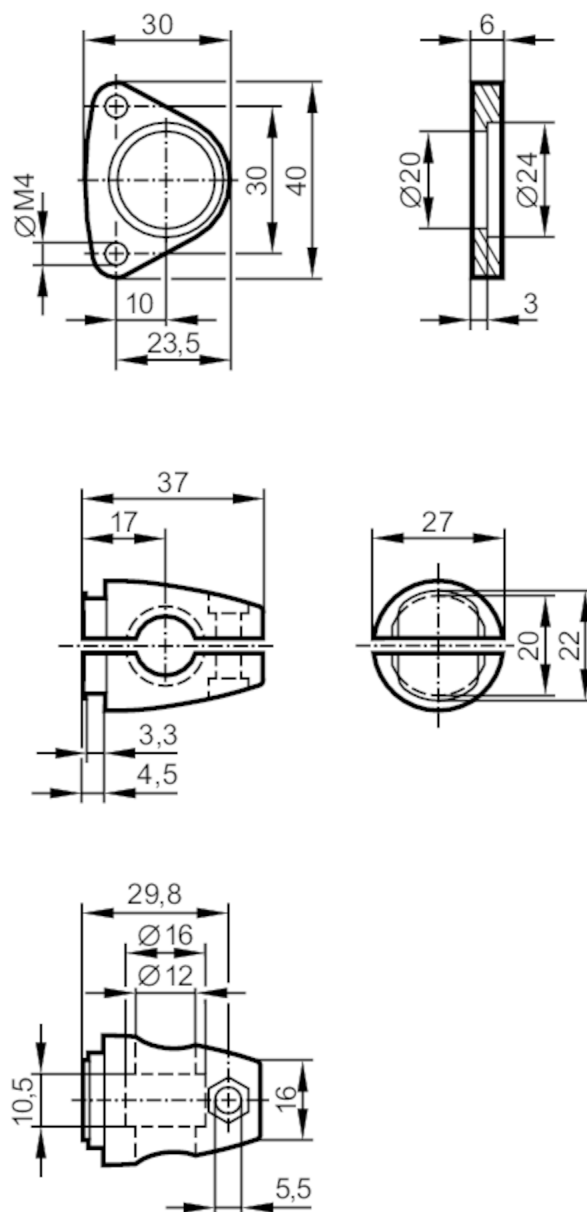


## Mounting set for photoelectric distance sensors

MOUNTING SET O1D 12MM



## Application

Design

clamp mounting

## Mechanical data

Weight

[g]

118.5

Type of mounting

Mounting rod; (Ø 12 mm)

Materials

fixture: stainless steel (304/1.4301); Clamp: stainless steel (1.4408); screws: stainless steel; nut: stainless steel

## Accessories

Items supplied

socket head screws: 2 x M4 x 45

## Remarks

Pack quantity

1 pcs.