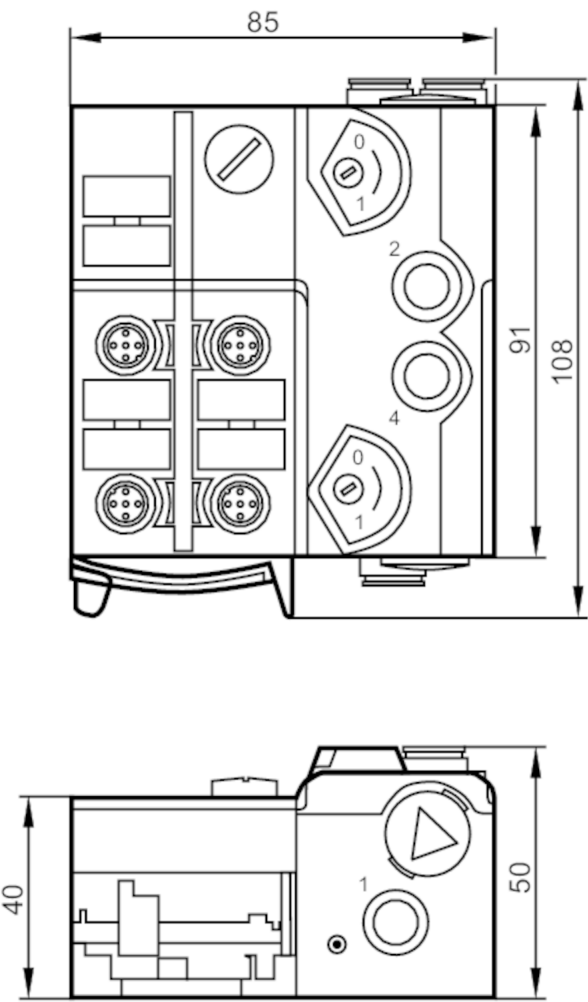




AS-Interface Airbox with quick mounting technology

AirBox 5/3 closed 4DI-Y AUX



Application		
Application		field installation
Medium temperature	[°C]	-10...50
Electrical data		
Operating voltage	[V]	26.5...31.6 DC
Max. current consumption from AS-i	[mA]	280
Additional voltage supply	[V]	18...30 DC; (to PELV)
Additional voltage supply		required
Max. current consumption from additional supply	[mA]	10
Integrated watchdog		yes
Inputs / outputs		
Number of inputs and outputs		Number of digital inputs: 4; Number of pneumatic outputs: 2

AirBox 5/3 closed 4DI-Y AUX

Mechanical data		
Weight	[g]	384
Type of mounting		quick mounting
Materials		PA; POM; piercing contacts: CuSn6 nickel-plated and tin-plated
Pneumatic system		1 x 5/3-way slide valve (free from overlapping); middle position blocked
Operating pressure range	[bar]	3...8
Operating pressure range	[MPa]	0.3...0.8
Operating pressure range	[psi]	43.5...116
Air flow at 6/5 bar	[l/min]	400
Permissible compressed air		non-lubricated compressed air class 6-3-1; lubricated compressed air class 6-3-4

AC5271



AS-Interface Airbox with quick mounting technology

AirBox 5/3 closed 4DI-Y AUX

Manual override	pressing/releasing or pressing/turning/locking	
Tube fittings	8 mm	
Exhaust	exhaust can be discharged through tube connection	
Displays / operating elements		
Display	operation	LED, green
	errors	LED, red
	function	LED, yellow
Electrical connection		
Module connection	Flat cables	
Accessories		
Items supplied	lower part	
Accessories (optional)	Mounting plate:, E74999	
	Module lower part:, E75000	
	Protective cap: M12, E73004	
	sealing plugs:, E75231	
	silencer:, E75232	
	Push-in L-fitting:, E75228	
	Push-in T-fitting:, E75227	
Remarks		
Remarks	If not pneumatically operated, E75231 sealing plug must be inserted.	
	Avoid ingress of dirt and dust.	
	Do not connect any of the following points to an external potential:	
	L-, L+, I-1, I-2, I-3, I-4	
	The connections are electrically connected with the AS-i cable.	
	Please see the notes on compressed air and EMC/ESD under "Downloads"	
Pack quantity	1 pcs.	

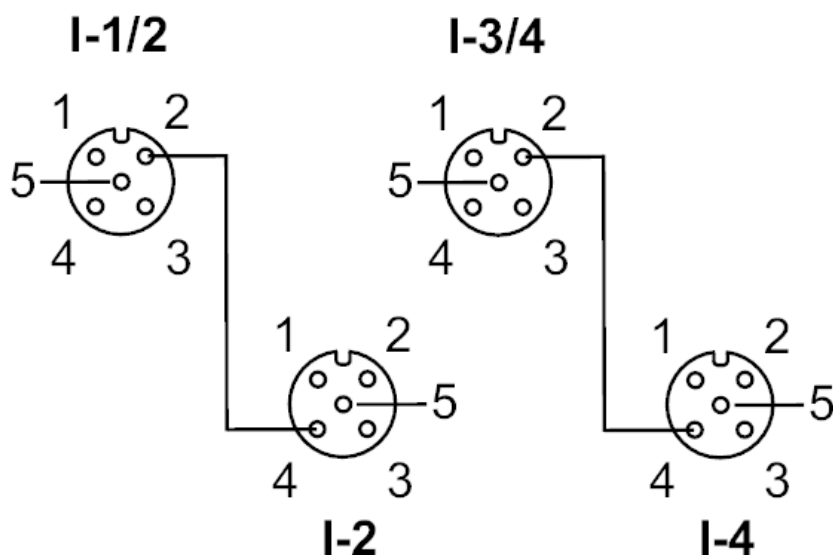
AS-Interface Airbox with quick mounting technology

AirBox 5/3 closed 4DI-Y AUX

Electrical connection

quick mounting technology for AS-i flat cable: ; three orientations possible

Connection



Connector: M12

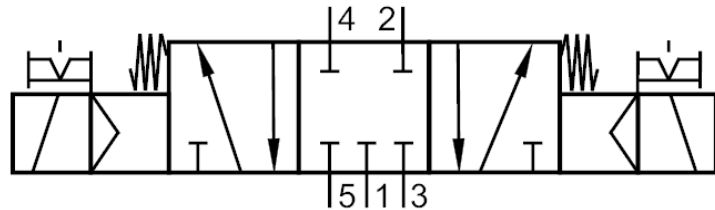
	Inputs
	socket I-1/2
1	Sensor supply L+
2	data input 2
3	Sensor supply L-
4	data input 1
5	not used
	socket I-2
1	Sensor supply L+
2	not used
3	Sensor supply L-
4	data input 2
5	not used
	socket I-3/4
1	Sensor supply L+
2	data input 4
3	Sensor supply L-
4	data input 3
5	not used
	socket I-4
1	Sensor supply L+
2	not used
3	Sensor supply L-
4	data input 4
5	not used

AS-Interface Airbox with quick mounting technology

AirBox 5/3 closed 4DI-Y AUX

Diagrams and graphs

Pneumatic symbol



1 x 5/3-way slide valve (free from overlapping); middle position blocked