

# PB5220



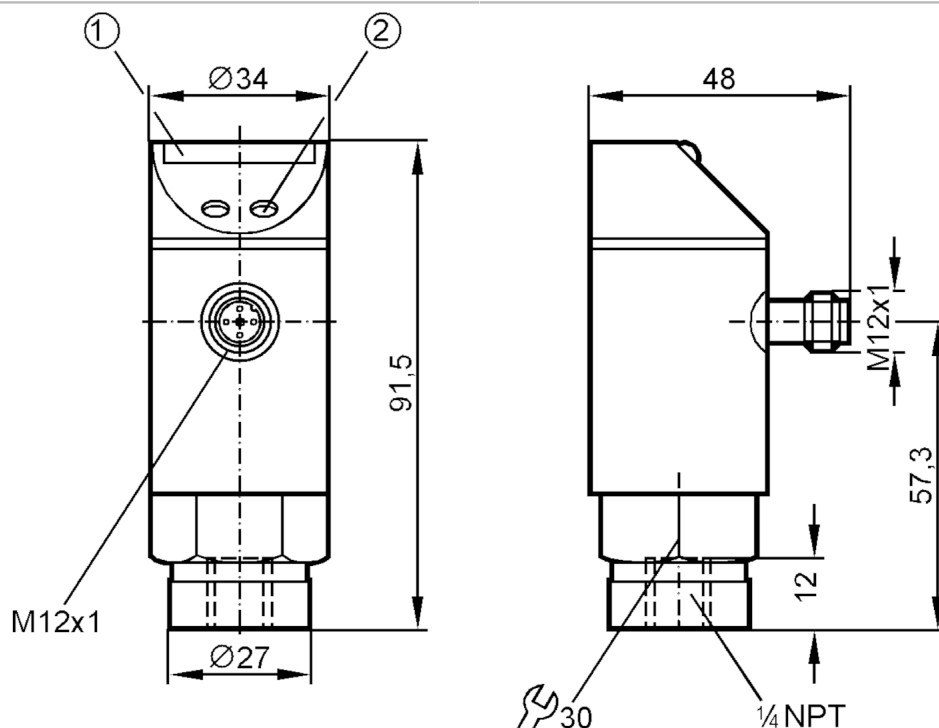
## Pressure sensor with LED bar display

PB-500PSBN14-HFPKG/US/ IV

Article no longer available - archive entry

Alternative articles: PN5200

When selecting an alternative article and accessories please note that technical data may differ!



- 1 LED bar display
- 2 programming button



### Product characteristics

Number of inputs and outputs	Number of digital outputs: 1
Measuring range [psi]	0...5000
Process connection	threaded connection 1/4" NPT external thread

### Application

Special feature	Gold-plated contacts
Application	for industrial applications
Media	liquids and gases
Conditionally suitable for	For gaseous media the application is limited to max. 25 bar.
Medium temperature [°C]	-25...80
Min. bursting pressure [psi]	14000
Pressure rating [psi]	8500
Type of pressure	relative pressure

### Electrical data

Operating voltage [V]	18...30 DC
Current consumption [mA]	< 50
Min. insulation resistance [MΩ]	100; (500 V DC)
Protection class	III



## Pressure sensor with LED bar display

PB-500PSBN14-HFPKG/US/ IV

Reverse polarity protection	yes
Power-on delay time [s]	0.2
Integrated watchdog	yes

### Inputs / outputs

Number of inputs and outputs	Number of digital outputs: 1
------------------------------	------------------------------

### Outputs

Total number of outputs	1
Output signal	switching signal
Electrical design	PNP
Number of digital outputs	1
Output function	normally open / normally closed; (parameterisable)
Max. voltage drop switching output DC [V]	2
Permanent current rating of switching output DC [mA]	250
Switching frequency DC [Hz]	10
Short-circuit protection	yes
Type of short-circuit protection	pulsed
Overload protection	yes

### Measuring/setting range

Measuring range [psi]	0...5000
Set point SP [psi]	250...5000
Reset point rP [psi]	150...4900
In steps of [psi]	50
Note on hysteresis	adjustable

### Accuracy / deviations

Switch point accuracy [% of the final value]	$< \pm 2,0$
Repeatability [% of the final value]	$< \pm 0,25$ ; (with temperature fluctuations $< 10$ K)
Temperature drift per 10 K	$< \pm 0.3$

### Software / programming

Adjustment of the switch point	programming button
--------------------------------	--------------------

### Operating conditions

Ambient temperature [°C]	-25...80
Storage temperature [°C]	-40...100
Protection	IP 65

### Tests / approvals

EMC	EN 61000-4-2 ESD	4 kV CD / 8 kV AD
	EN 61000-4-3 HF radiated	10 V/m
	EN 61000-4-4 Burst	2 kV
	EN 61000-4-6 HF conducted	10 V
Shock resistance	DIN IEC 68-2-27	50 g (11 ms)
Vibration resistance	DIN IEC 68-2-6	20 g (10...2000 Hz)

# PB5220



## Pressure sensor with LED bar display

PB-500PSBN14-HFPKG/US/ IV

Mechanical data		
Materials	EPDM/X; FKM; NBR; PA; PBT; PC; PTFE; stainless steel (1.4301 / 304)	
Materials (wetted parts)	FKM; ceramics; stainless steel (1.4305 / 303)	
Min. pressure cycles	100 million	
Process connection	threaded connection 1/4" NPT external thread	

Displays / operating elements		
Display	switching status	LED, yellow
	measured values	10 x LED, green Resolution 10% of the final value

Remarks		
Pack quantity	1 pcs.	

### Electrical connection

Connector: 1 x M12; coding: A; Contacts: gold-plated

