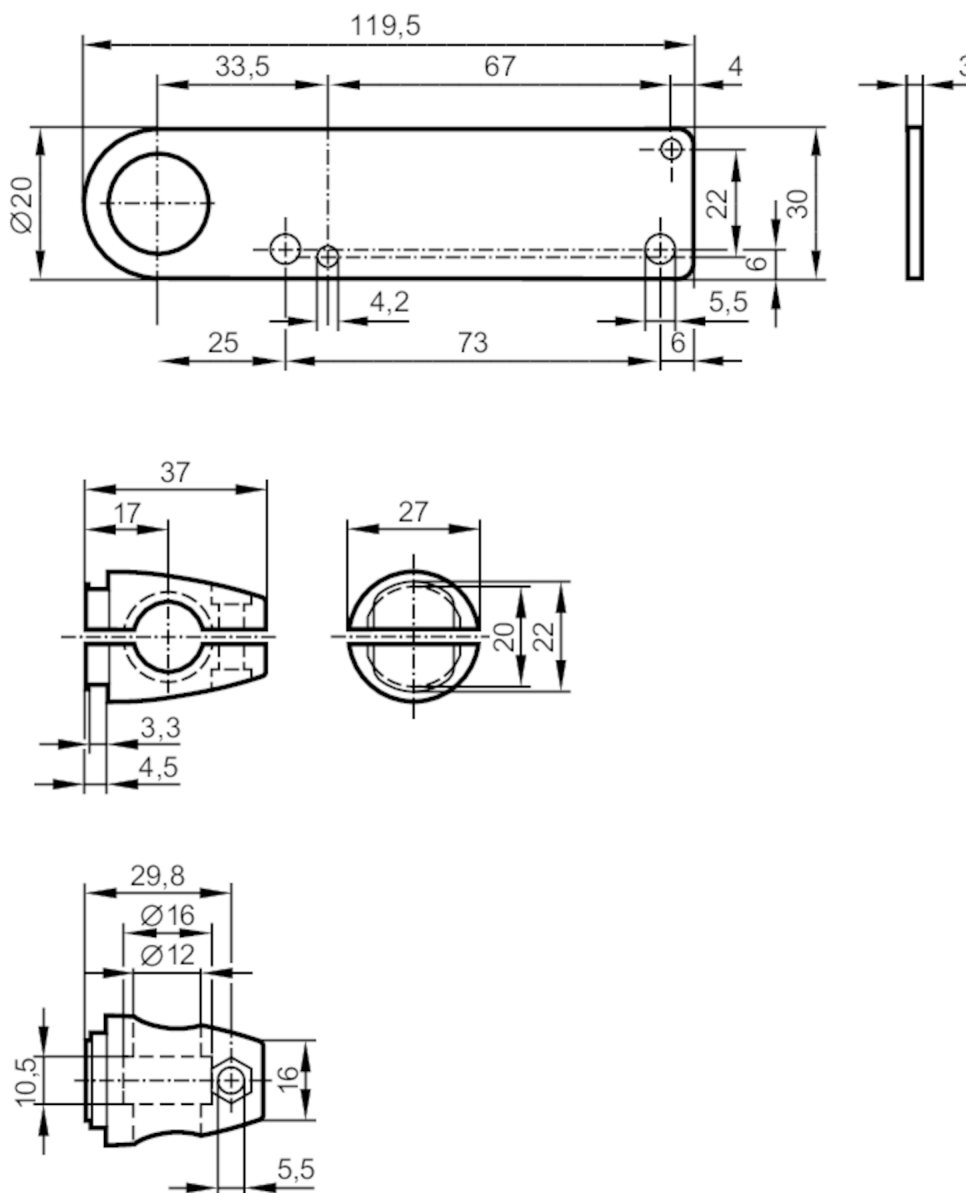


Mounting set for photoelectric sensors

SYSTEM COMPONENT OT BOLT

Article no longer available - archive entry



Application

Design

clamp mounting

Mechanical data

Weight

[g]

0.245

Type of mounting

free-standing; (M10)

Materials

fixture: stainless steel (1.4571/316Ti); Clamp: stainless steel (1.4408)

Accessories

Items supplied

head cap screw: 1 x M10 x 55

Remarks

Pack quantity

1 pcs.