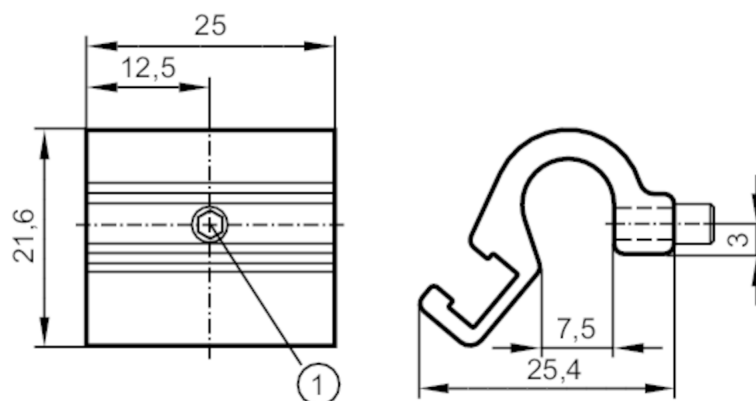




## Mounting adapter for tie-rod/integrated profile cylinders

ADAPT TIE ROD CYL D5-7



1 Mounting screw SW 2

### Application

Design for types MKT

### Mechanical data

Weight	[g]	11.5
Materials	Adapter: aluminium; screw: stainless steel	
Clamping range	[mm]	5...7

### Accessories

Items supplied Mounting screw: 1

### Remarks

Pack quantity 1 pcs.