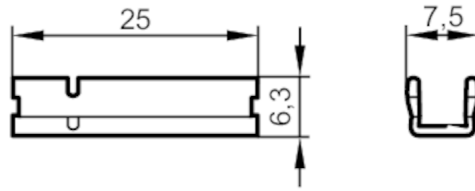


E11872



Mounting adapter for SMC pneumatic cylinders

ADAPTER FOR CYL SMC CP95



Application

Design for types MKT

Mechanical data

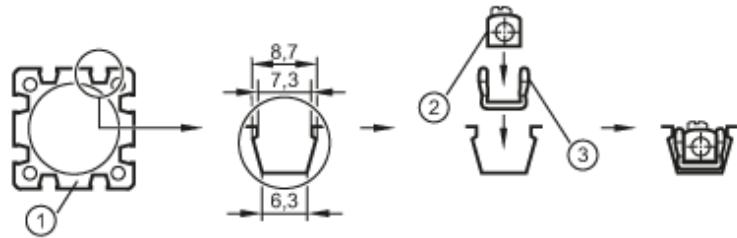
Weight [g]	3.4
Type of mounting	for series: SMC CP95
Dimensions [mm]	6.3 x 25 x 7.5
Materials	stainless steel

Remarks

Pack quantity 1 pcs.

Diagrams and graphs

Installation



- 1 cylinder z.B. SMC CP95
- 2 Cylinder sensor
- 3 Adapter E11872