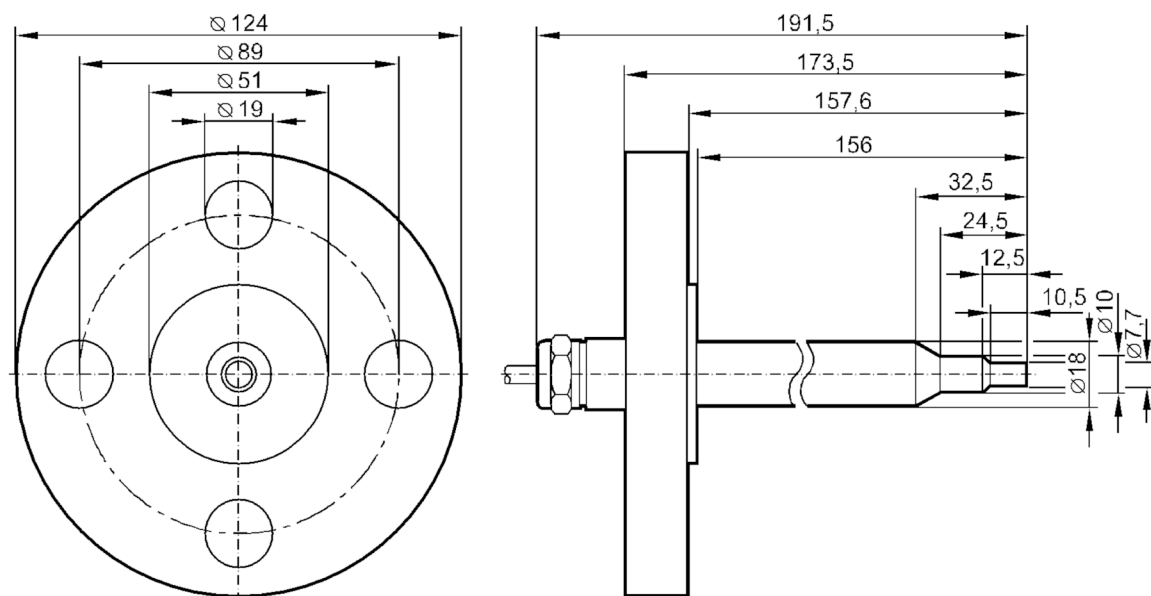


## Flow sensor for connection to an evaluation unit

SFG18ABBE1

Article no longer available - archive entry



## Product characteristics

Process connection	ANSIB 16.5 (1 in; 300 lb/sq.in)
--------------------	---------------------------------

## Application

Application	Ex zone 1
Medium temperature [°C]	-25...80
Pressure rating [bar]	30

## Liquids

Application	Ex zone 1
Medium temperature [°C]	-25...80

## Gases

Medium temperature [°C]	-25...80
-------------------------	----------

## Electrical data

Connection to control monitor	VS 0200 Exi
-------------------------------	-------------

## Measuring/setting range

## Liquids

Setting range [cm/s]	3...300
Greatest sensitivity [cm/s]	3...60

## Gases

Setting range [cm/s]	200...2000
Greatest sensitivity [cm/s]	200...800

## Accuracy / deviations

Temperature gradient [K/min]	15
------------------------------	----

## Response times

Response time [s]	1...10
-------------------	--------

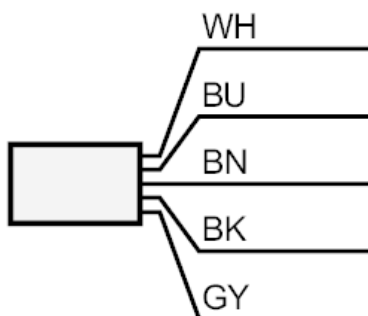
# SF0713



## Flow sensor for connection to an evaluation unit

SFG18ABBE1

Liquids		
Response time	[s]	1...10
Gases		
Response time	[s]	1...10
Operating conditions		
Protection		IP 67
Mechanical data		
Housing		cylindrical
Dimensions	[mm]	Ø 18
Materials		stainless steel (1.4571/316Ti )
Materials (wetted parts)		stainless steel (1.4571/316Ti )
Process connection		ANSIB 16.5 (1 in; 300 lb/sq.in)
Remarks		
Pack quantity		1 pcs.
Electrical connection		
Cable: 2 m, TPE-S; Maximum cable length: 100 m; 5 x 0.34 mm <sup>2</sup>		
Connection		



	Core colours :
BN =	brown
BU =	blue
BK =	black
WH =	white
GY =	grey