

RU1102



Incremental encoder with solid shaft

RU-0500-I05/P1

Tests / approvals

| | | |
|----------------------|--|---------------------|
| Shock resistance | | 100 g (6 ms) |
| Vibration resistance | | 10 g (55...2000 Hz) |

Mechanical data

| | |
|---|----------------|
| Dimensions [mm] | Ø 58 / L = 46 |
| Materials | aluminium |
| Max. revolution, mechanical [U/min] | 12000 |
| Max. starting torque [Nm] | 1 |
| Reference temperature torque [°C] | 20 |
| Shaft design | solid shaft |
| Shaft diameter [mm] | 6 |
| Shaft material | steel (1.4104) |
| Max. shaft load axial (at the shaft end) [N] | 10 |
| Max. shaft load radial (at the shaft end) [N] | 20 |
| Fixing flange | synchro-flange |

Electrical connection

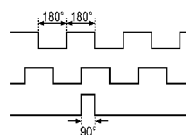
Cable: 1 m, PUR; axial

| | |
|------------------|------------------|
| pink (1) | B inverted |
| blue (2) | +5V sensor |
| red (3) | 0 index |
| black (4) | 0 index inverted |
| brown (5) | A |
| green (6) | A inverted |
| lilac (7) | failure inverted |
| grey (8) | B |
| pin 9 | n.c. |
| white/green (10) | 0V (Un) |
| white (11) | 0V sensor |
| brown/green (12) | +5V (Up) |
| screen | housing |

Connector: 1 x (ifm 1001.1)

Diagrams and graphs

Pulse diagram



Output A

Output B

0 index

Article no longer available - archive entry