



## Continuous level sensor

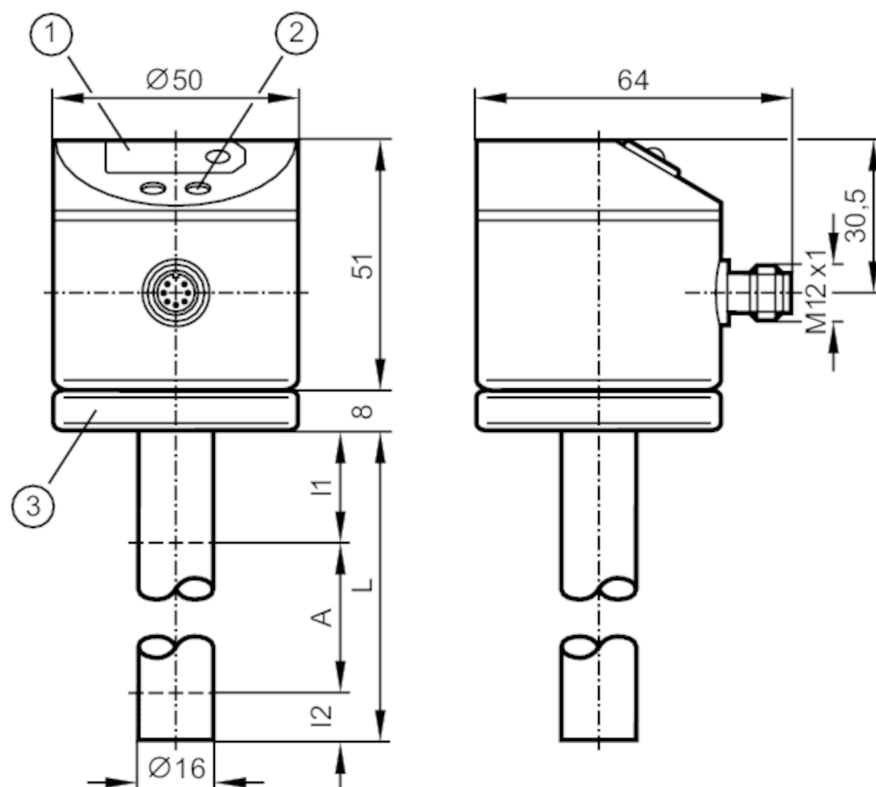
LK0264A-A-00KSPKG/US

Article no longer available - archive entry

Alternative articles: LK8122

When selecting an alternative article and accessories please note that technical data may differ!

For 8-pole sockets the core colours are not standardised.  
Please note the wiring of the sensor and the sockets (see data sheet).



- 1 7-segment LED display
- 2 programming button
- 3 housing connection with cable lug for cable 1.5...2.5 mm<sup>2</sup>



### Product characteristics

Number of inputs and outputs	Number of digital outputs: 4
Probe length L [mm]	264

### Application

Special feature	Gold-plated contacts
Media	hydrous coolants; mineral oils (dielectric constant < 3); water; media similar to water
Dielectric constant of the medium	> 2
Cannot be used for	media with separation layers (oil / water; oil / metal layer); acids and alkalis
Medium temperature [°C]	0...65; (For water and hydrous media with temperatures > 35 °C install the unit into a climatic tube.)
Tank pressure [bar]	0.5; (when mounting with mounting accessories: E43001 - E43007, E43019)



## Continuous level sensor

LK0264A-A-00KSPKG/US

Electrical data		
Operating voltage	[V]	18...30 DC
Current consumption	[mA]	< 80
Protection class		III
Reverse polarity protection		yes
Power-on delay time	[s]	3
Measuring principle		capacitive
Inputs / outputs		
Number of inputs and outputs		Number of digital outputs: 4
Outputs		
Total number of outputs		4
Output signal		switching signal
Electrical design		PNP
Number of digital outputs		4
Output function		normally open / normally closed; (parameterisable)
Max. voltage drop switching output DC	[V]	2.5
Permanent current rating of switching output DC	[mA]	300; (400 (...25 °C))
Short-circuit protection		yes
Type of short-circuit protection		pulsed
Overload protection		yes
Measuring/setting range		
Probe length L	[mm]	264
Active range A	[mm]	195
Inactive range I1 / I2	[mm]	53 / 15
Setting range		
Set point SP	[mm]	25...205
Reset point rP	[mm]	20...200
In steps of	[mm]	5
Hysteresis	[mm]	5
Accuracy / deviations		
Measuring error		± 5
	[% of the final value]	
Repeatability		± 2
Software / programming		
Adjustment of the switch point		programming button
Operating conditions		
Ambient temperature	[°C]	0...60
Storage temperature	[°C]	-25...80
Protection		IP 67



## Continuous level sensor

LK0264A-A-00KSPKG/US

## Tests / approvals

EMC	EN 61000-4-2 ESD	4 kV CD / 8 kV AD
	EN 61000-4-3 HF radiated	10 V/m
	EN 61000-4-4 Burst	2 kV
	EN 61000-4-5 Surge	500 V / 1 kV
	EN 61000-4-6 HF conducted	10 V
Shock resistance		12 g
Vibration resistance		2.5 g

## Mechanical data

Dimensions	[mm]	Ø 16
Materials	EPDM/X; FKM; brass Optalloy-plated; NBR; PA; PBT; PC; PP	
Materials (wetted parts)	PP	

## Displays / operating elements

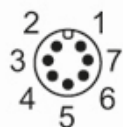
Display	switching status	3 x LED, red
	function display	7-segment LED display
	measured values	7-segment LED display

## Remarks

Pack quantity	1 pcs.
---------------	--------

## Electrical connection

Connector: 1 x M12; coding: A; Contacts: gold-plated



## Connection

