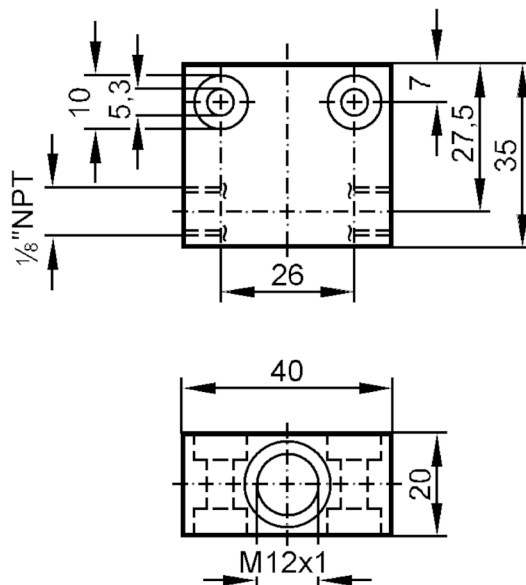


## Process adapter for small volumetric flow quantities

FLOW ADAPT M12X1 AL

Article no longer available - archive entry



## Application

|                         |  |
|-------------------------|--|
| Design                  | for flow sensors and flow monitors M12 x 1 |
| Medium temperature [°C] | 0...80                                     |

## Measuring/setting range

|                     |        |
|---------------------|--------|
| Flow range [ml/min] | 2...50 |
|---------------------|--------|

## Tests / approvals

|                              |   |
|------------------------------|---|
| Pressure Equipment Directive | A possible classification to PED depends on the application and has to be carried out by the user / operator. |
| Safety instructions          | The compatibility between medium and product material has to be checked in all applications.                  |

## Mechanical data

|                    |   |
|--------------------|---|
| Type of mounting   | cable gland; (1/8" NPT installation position as required) |
| Dimensions [mm]    | M12   |
| Thread designation | M12   |
| Materials          | AlCuMgPb (3.1645) black anodised                          |

## Remarks

|               |        |
|---------------|--------|
| Pack quantity | 1 pcs. |
|---------------|--------|