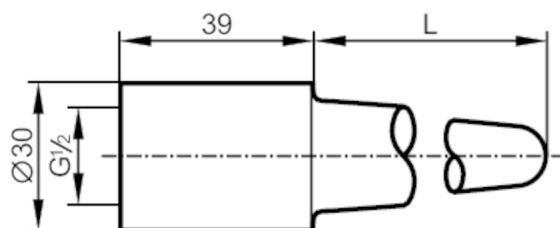


## Welding thermowell for temperature sensors

WELDING THERMOWELL G1/2



## Application

Design for temperature sensors EL = 100 mm

Pressure rating [bar] 100

## Measuring/setting range

Probe length L [mm] 73

## Mechanical data

Weight [g] 315.7

Dimensions [mm] Ø 10

Materials stainless steel (1.4571/316Ti)

Sensor connection G 1/2

Process connection welding adapter Ø 30 mm

Surface characteristics Ra/Rz of the wetted parts &lt; 0.6 / -

## Remarks

Pack quantity 1 pcs.