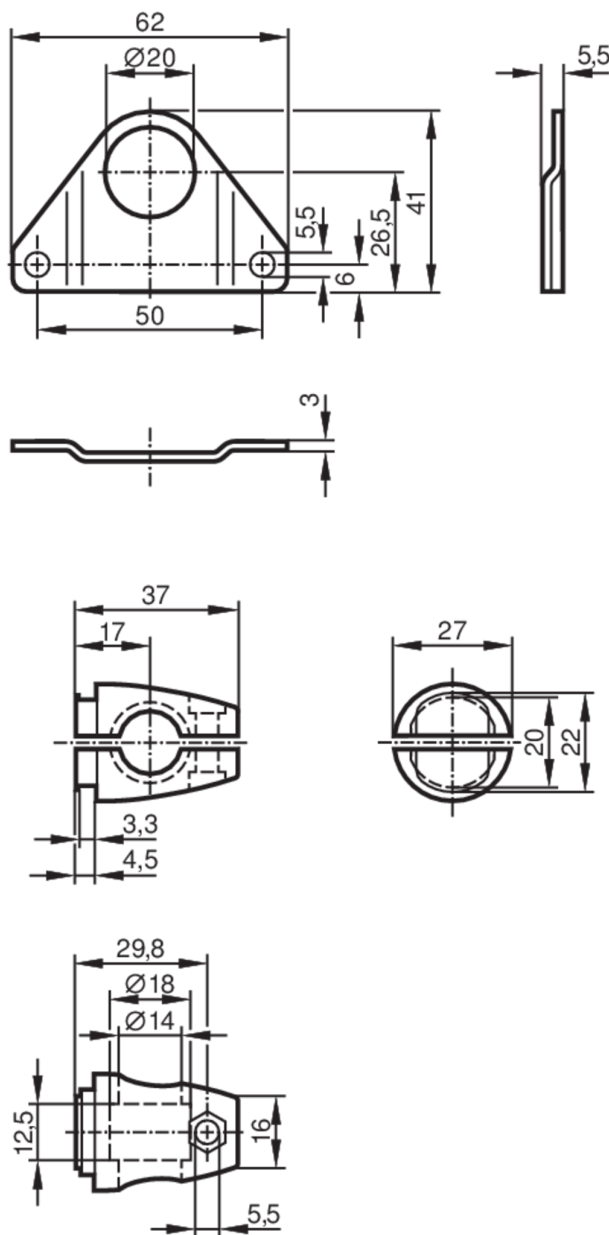


Mounting set for photoelectric sensors

SYSTEM COMPONENT OL BOLT

phase-out article



Application

Design

clamp mounting

Mechanical data

Weight

[g]

266

Type of mounting

free-standing; (M12)

Materials

Clamp: stainless steel (1.4408); fixture: stainless steel (316Ti/1.4571)

Accessories

Items supplied

screw: 1 x M12 x 120

Remarks

Pack quantity

1 pcs.