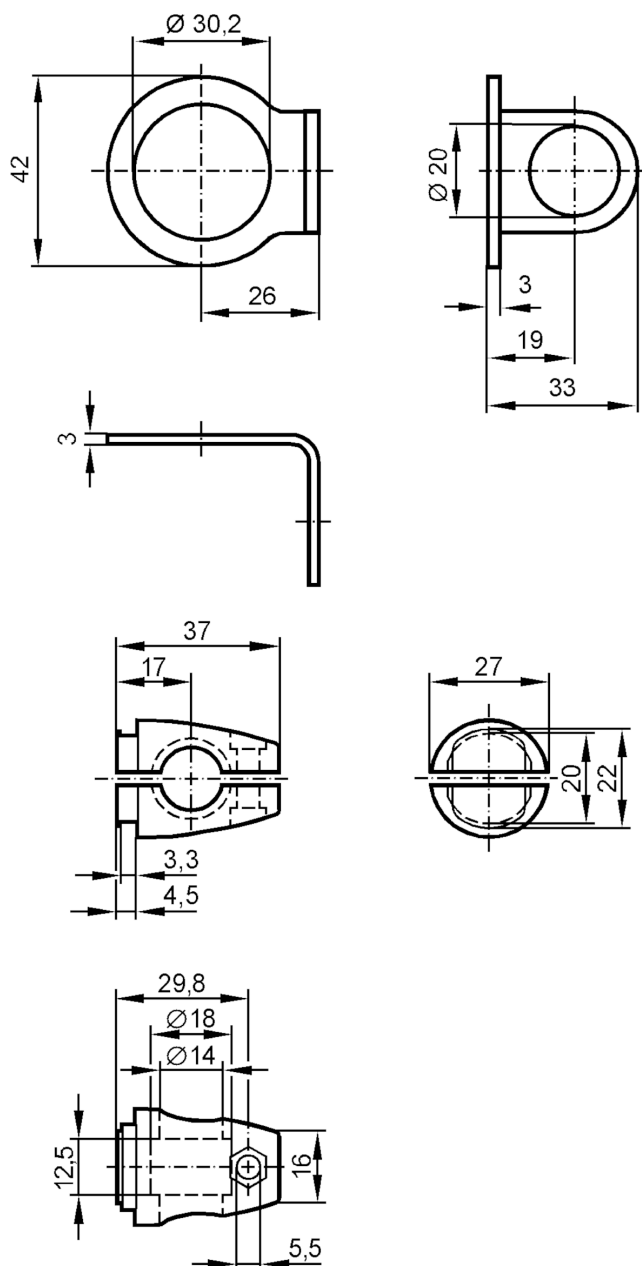


## Mounting set for position sensors

SYSTEM COMPONENT M30 BOLT



## Application

Design

clamp mounting

## Mechanical data

Weight

[g]

213.5

Type of mounting

free-standing; (M12)

Dimensions

[mm]

 $\varnothing 30.2$ 

Materials

fixture: stainless steel (316Ti/1.4571); Clamp: stainless steel (1.4408)

## Accessories

Items supplied

screw: 1 x M12 x 55

## Remarks

Pack quantity

1 pcs.