

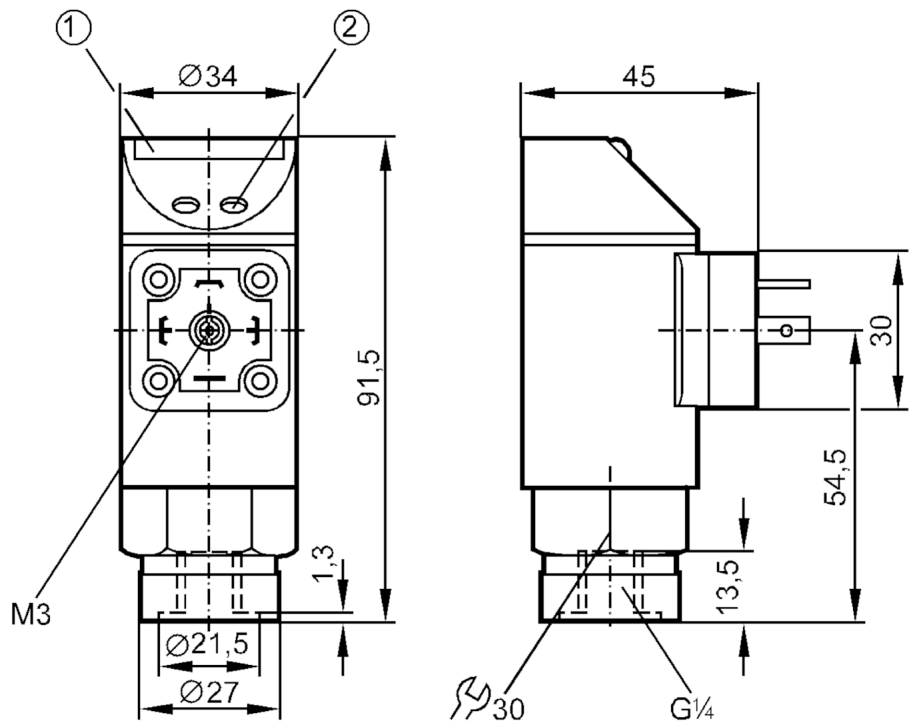


Pressure sensor with LED bar display

PZ-100-SBR14-HFPKG/SS/ IV

Article no longer available - archive entry

Alternative articles: PN5002  
When selecting an alternative article and accessories please note that technical data may differ!



- 1 LED bar display
- 2 programming button



| Product characteristics      |  |
|------------------------------|--|
| Number of inputs and outputs | Number of digital outputs: 1                                 |
| Measuring range [bar]        | 0...100  |
| Process connection           | threaded connection G 1/4 internal thread                    |
| Application                  |  |
| Application                  | for industrial applications                                  |
| Media                        | liquids and gases  |
| Conditionally suitable for   | For gaseous media the application is limited to max. 25 bar. |
| Medium temperature [°C]      | -25...80   |
| Min. bursting pressure [bar] | 650  |
| Pressure rating [bar]        | 300  |
| Type of pressure             | relative pressure  |



## Pressure sensor with LED bar display

PZ-100-SBR14-HFPKG/SS/ IV

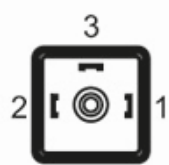
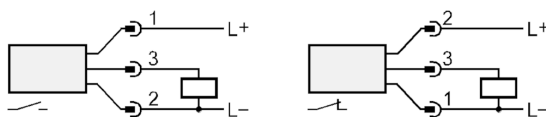
| Electrical data                                 |                        |  |
|---|------------------------|--|
| Operating voltage                               | [V]                    | 18...30 DC   |
| Current consumption                             | [mA]                   | < 50   |
| Min. insulation resistance                      | [MΩ]                   | 100; (500 V DC)                                    |
| Protection class                                |                        | III  |
| Reverse polarity protection                     |                        | yes  |
| Power-on delay time                             | [s]                    | 0.2  |
| Integrated watchdog                             |                        | yes  |
| Inputs / outputs                                |                        |  |
| Number of inputs and outputs                    |                        | Number of digital outputs: 1                       |
| Outputs   |                        |  |
| Total number of outputs                         |                        | 1  |
| Output signal                                   |                        | switching signal                                   |
| Electrical design                               |                        | PNP  |
| Number of digital outputs                       |                        | 1  |
| Output function                                 |                        | normally open / normally closed; (parameterisable) |
| Max. voltage drop switching output DC           | [V]                    | 2  |
| Permanent current rating of switching output DC | [mA]                   | 250  |
| Switching frequency DC                          | [Hz]                   | 5  |
| Short-circuit protection                        |                        | yes  |
| Type of short-circuit protection                |                        | pulsed   |
| Overload protection                             |                        | yes  |
| Measuring/setting range                         |                        |  |
| Measuring range                                 | [bar]                  | 0...100  |
| Set point SP                                    | [bar]                  | 4...100  |
| Reset point rP                                  | [bar]                  | 3...99   |
| In steps of                                     | [bar]                  | 1  |
| Note on hysteresis                              |                        | adjustable   |
| Accuracy / deviations                           |                        |  |
| Switch point accuracy                           |                        | < ± 2,0  |
|   | [% of the final value] |  |
| Repeatability                                   |                        | < ± 0,25; (with temperature fluctuations < 10 K)   |
|   | [% of the final value] |  |
| Temperature drift per 10 K                      |                        | < ± 0.3  |
| Software / programming                          |                        |  |
| Adjustment of the switch point                  |                        | programming button                                 |
| Operating conditions                            |                        |  |
| Ambient temperature                             | [°C]                   | -25...80   |
| Storage temperature                             | [°C]                   | -40...100  |
| Protection                                      |                        | IP 65  |

# PZ9892



## Pressure sensor with LED bar display

PZ-100-SBR14-HFPKG/SS/ IV

| Tests / approvals   |   |   |
|---|---|---|
| EMC   | EN 61000-4-2 ESD  | 4 kV CD / 8 kV AD                                 |
|   | EN 61000-4-3 HF radiated                                    | 10 V/m  |
|   | EN 61000-4-4 Burst  | 2 kV  |
|   | EN 61000-4-6 HF conducted                                   | 10 V  |
| Shock resistance  | DIN IEC 68-2-27   | 50 g (11 ms)                                      |
| Vibration resistance  | DIN IEC 68-2-6  | 20 g (10...2000 Hz)                               |
| Mechanical data   |   |   |
| Materials   | EPDM/X; FKM; NBR; PA; PBT; PC; stainless steel (304/1.4301) |   |
| Materials (wetted parts)  | stainless steel (303/1.4305); ceramics; FKM                 |   |
| Min. pressure cycles  | 100 million   |   |
| Process connection  | threaded connection G 1/4 internal thread                   |   |
| Displays / operating elements   |   |   |
| Display   | switching status  | LED, yellow                                       |
|   | measured values   | 10 x LED, green Resolution 10% of the final value |
| Remarks   |   |   |
| Pack quantity   | 1 pcs.  |   |
| Electrical connection   |   |   |
| Connector: 1 x valve type A DIN (DIN EN 175301-803)   |   |   |
| <div></div>  |   |   |
| <div></div> |   |   |