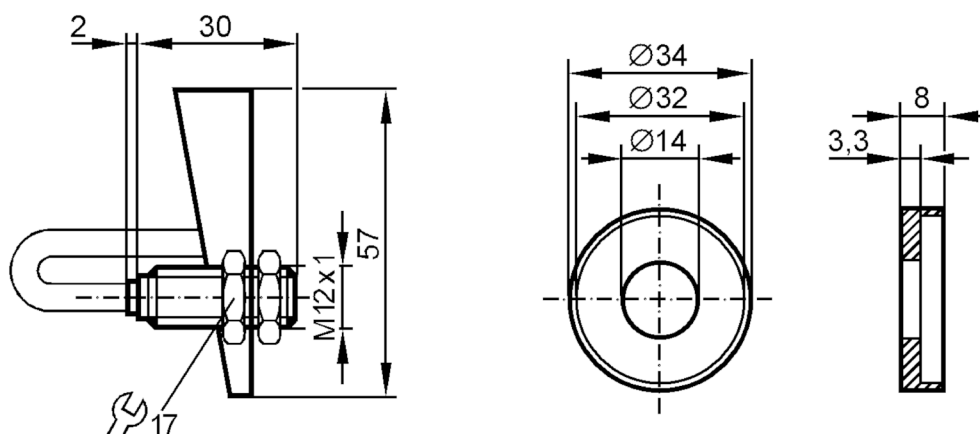


## Inductive sensor

IF-04-N SS-L-S

Article no longer available - archive entry



## Product characteristics

Output function		normally closed
Sensing range	[mm]	4
Housing		threaded type
Dimensions	[mm]	M12 x 1

## Application

Application		not for use in hazardous areas (not ATEX approved)
Installation		for valves; (38...63,5 (NW 40...65))

## Electrical data

Connection to switching amplifiers		yes
Switching amplifiers		connection to switching amplifiers according to EN 60947-5-6
Nominal voltage DC	[V]	8.2; (1k $\Omega$ )
Supply voltage DC	[V]	7.5...30
Current consumption	[mA]	undamped: > 2,1; damped: < 1
Protection class		III

## Outputs

Output function		normally closed
Permanent current rating of switching output DC	[mA]	30
Switching frequency DC	[Hz]	1500

## Detection zone

Sensing range	[mm]	4
---------------	------	---

# IF7035



## Inductive sensor

IF-04-N SS-L-S

### Operating conditions

Ambient temperature	[°C]	-20...70
Protection		IP 65

### Tests / approvals

EMC	EN 60947-5-2	
	EN 55011	class B

### Mechanical data

Weight	[g]	0.001
Housing		threaded type
Mounting		non-flush mountable
Dimensions	[mm]	M12 x 1
Thread designation		M12 x 1
Materials		PBT; Target: stainless steel (1.4301 / 304)

### Accessories

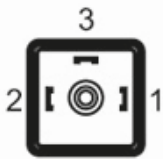
Items supplied	lock nuts: 2
	Target

### Remarks

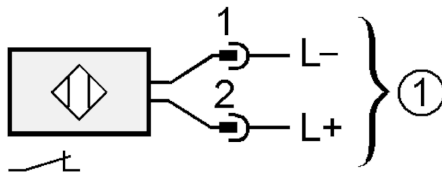
Remarks	Note:
	The sensors are adjusted with the enclosed target flag.
	If an older type of target flag is used, there is a risk of mechanical damage to the sensor if they are not adjusted properly.
Pack quantity	1 pcs.

### Electrical connection - plug

Connector: 1 x valve plug type A DIN (DIN EN 175301-803)



### Connection



1 = Connection to switching amplifiers  
1-2: Low