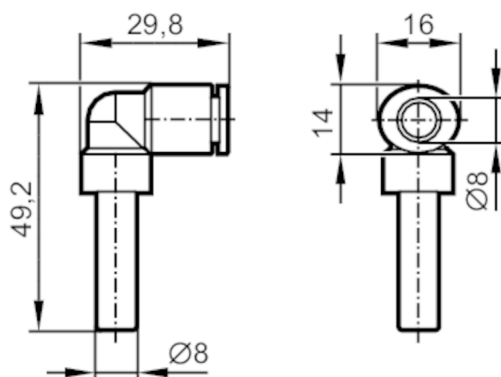




Push-in L-fitting for pneumatic connections

AirBox push-in L-connect 10pcs



Application

| | |
|-------|--|
| Media | compressed air according to ISO 8573-1: 2001 |
|-------|--|

Operating conditions

| | | |
|---------------------|-------|------------------|
| Operating pressure | [bar] | 10; (min. -0,95) |
| Ambient temperature | [°C] | -20...80 |

Mechanical data

| | | |
|-----------------|--|------|
| Weight | [g] | 69.5 |
| Materials | housing: nickel-plated brass / PA66; release ring: polyoxymethylene; Tooth lock washer: stainless steel; form ring: NBR | |
| Tube fittings | | 8 mm |
| Sleeve diameter | [mm] | 8 |

Remarks

| | |
|---------------|---------|
| Pack quantity | 10 pcs. |
|---------------|---------|