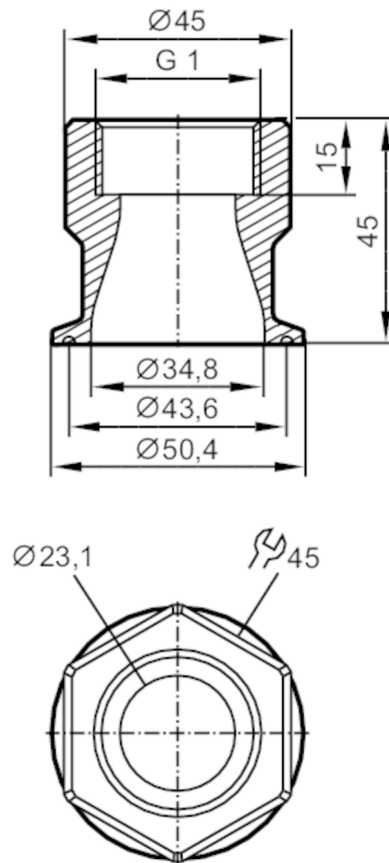


E40253



Mounting adapter for flow sensors

ADAPT G1-CLAMP/D50,5/DIN32676



Application

Design	for flow sensors, Typ SM8, Typ SU8
Application	for industrial applications; hygienic systems
Media	Liquids
Pressure rating [bar]	16

Tests / approvals

Pressure Equipment Directive	A possible classification to PED depends on the application and has to be carried out by the user / operator.
Safety instructions	The compatibility between medium and product material has to be checked in all applications.

Mechanical data

Weight [g]	662.5
Materials	Adapter: stainless steel (316L/1.4404); Gasket: Centellen 23,5 x 30 x 3 mm
Sensor connection	G 1
Process connection	Clamp DN40 (1,5") DIN 32676 (ISO 2852)

Accessories

Items supplied	O-rings: 2
----------------	------------

Remarks

Pack quantity	2 pcs.
---------------	--------