

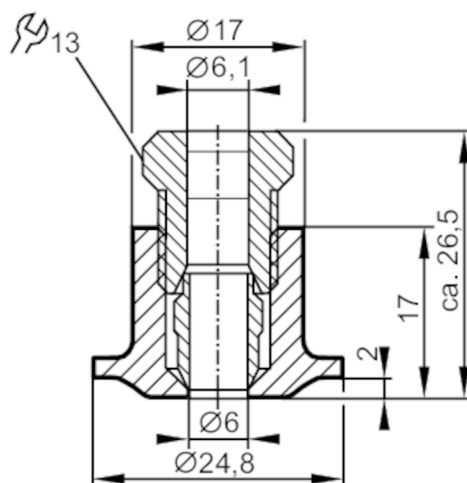
Welding adapter for process sensors

EINSHWADAPT D6 V4A

Article no longer available - archive entry

Alternative articles: E30108

When selecting an alternative article and accessories please note that technical data may differ!



Application

Design	for temperature sensors Ø 6 mm
Installation	Clamp fitting
Pressure rating [bar]	160

Tests / approvals

Pressure Equipment Directive	A possible classification to PED depends on the application and has to be carried out by the user / operator.
Safety instructions	The compatibility between medium and product material has to be checked in all applications.

Mechanical data

Materials	stainless steel (316L/1.4404)
Sensor connection	Ø 6 mm

Remarks

Pack quantity	1 pcs.
---------------	--------