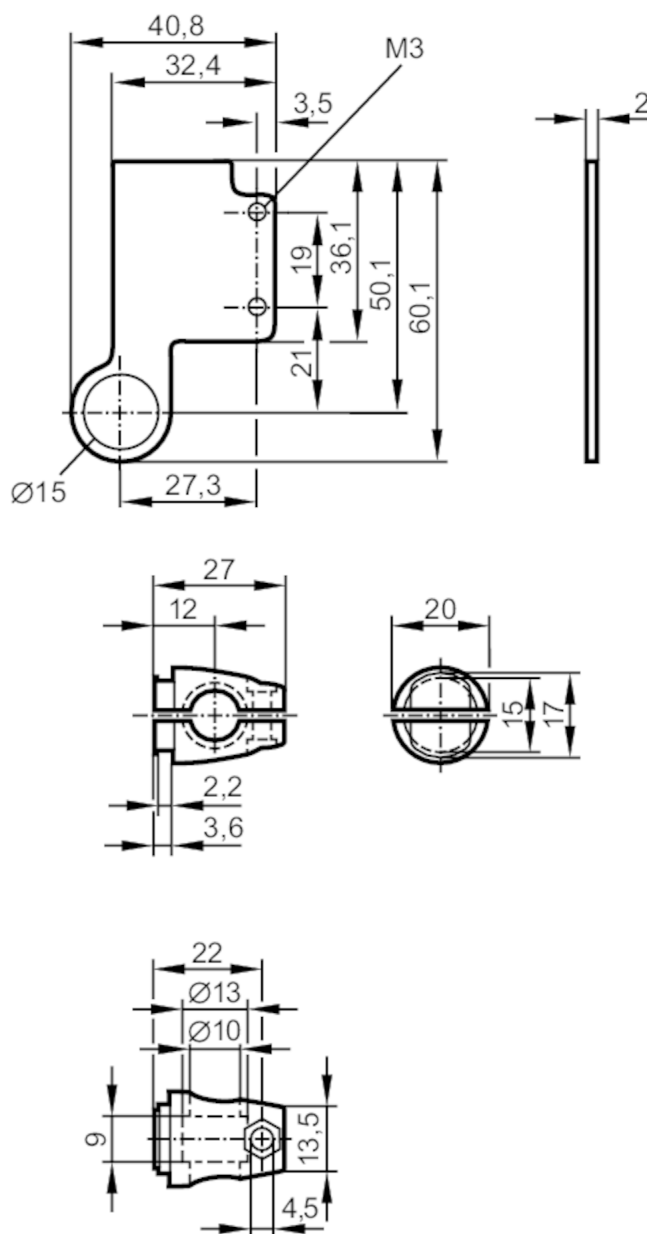


Mounting set for photoelectric sensors

SYSTEM COMPONENT OJ ROD



Application

Design

for side lens

Mechanical data

Weight

[g]

59.5

Type of mounting

Mounting rod; (Ø 10 mm)

Materials

Clamp: diecast zinc; fixture: stainless steel (316Ti/1.4571)

Accessories

Items supplied

screw: 1 x M4 x 12

nut: 1 x M4

Remarks

Pack quantity

1 pcs.