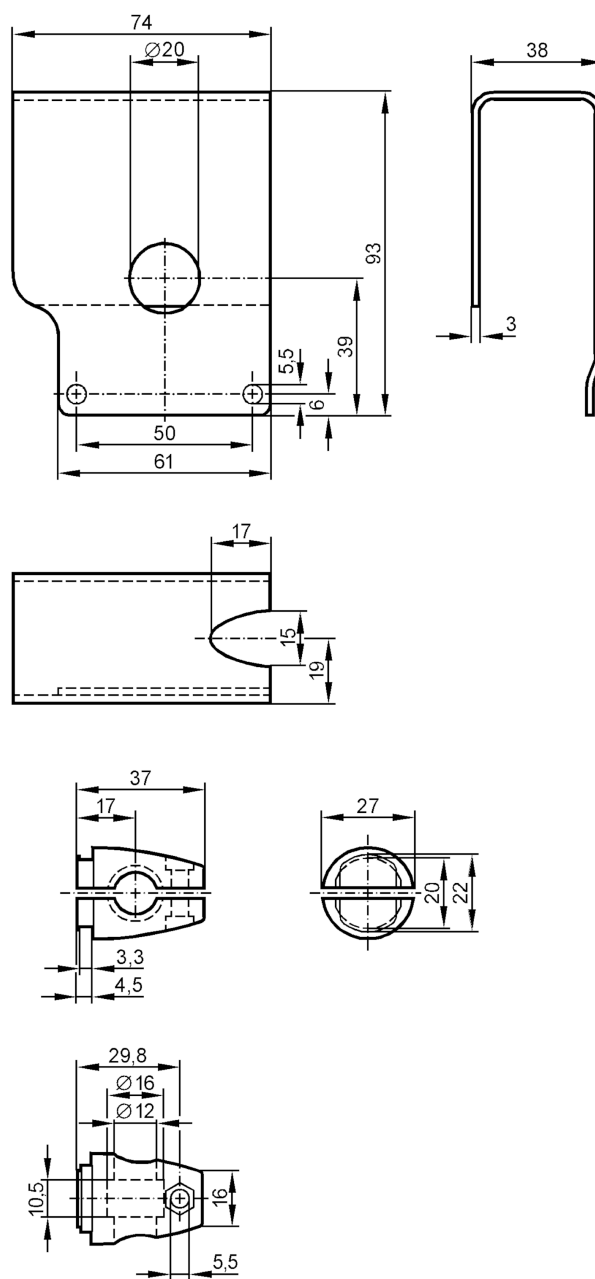


# Mounting set with protective cover for photoelectric sensors

MOUNTING SET FOR OL

Article no longer available - archive entry



## Application

Design

clamp mounting, with protective cover

## Mechanical data

Type of mounting

Mounting rod; ( $\varnothing 12$  mm)

Materials

fixture: stainless steel (303/1.4305); Clamp: brass nickel-plated

## Remarks

Pack quantity

1 pcs.