

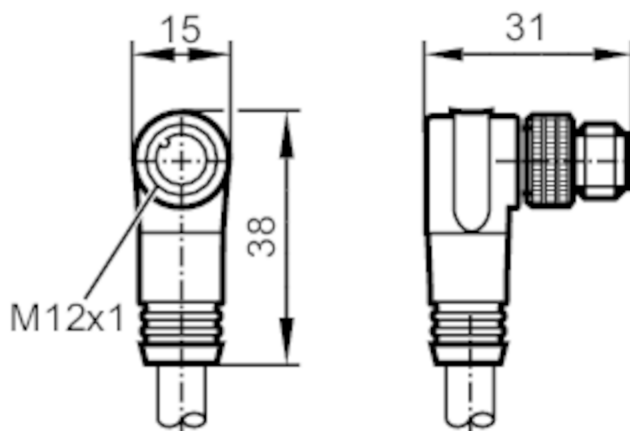
E12346



Connecting cable with plug

ASTGA050MSS01,5C04

Article no longer available - archive entry



Application

Special feature	Free from silicone; Gold-plated contacts; Screened cable
Free from silicone	yes

Electrical data

Operating voltage [V]	< 30 AC / < 36 DC
Protection class	II
Max. current load total [A]	4

Operating conditions

Ambient temperature [°C]	-25...90
Protection	IP 68

Mechanical data

Weight [g]	127.4
Dimensions [mm]	38 x 15 x 31
Materials	housing: TPU black
Material nut	brass, nickel-plated

Remarks

Remarks	The CAN bus terminating resistor (120 Ω) is integrated in the M12 connector.
Pack quantity	1 pcs.

E12346



Connecting cable with plug

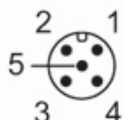
ASTGA050MSS01,5C04

Electrical connection

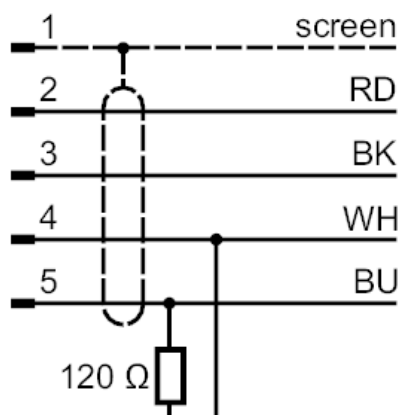
Cable: 1.5 m, PVC, lilac, Ø 6.7 mm, shielded; 2 x 0.34 mm² / AWG 22 + 2 x 0.25 mm² / AWG 24

Electrical connection - plug

Connector: 1 x M12, angled; coding: A; Locking: brass, nickel-plated; Contacts: gold-plated; Shielded connection cable: screen not connected



Connection



	Core colours :
BK =	black
BU =	blue
RD =	red
WH =	white
screen =	screen