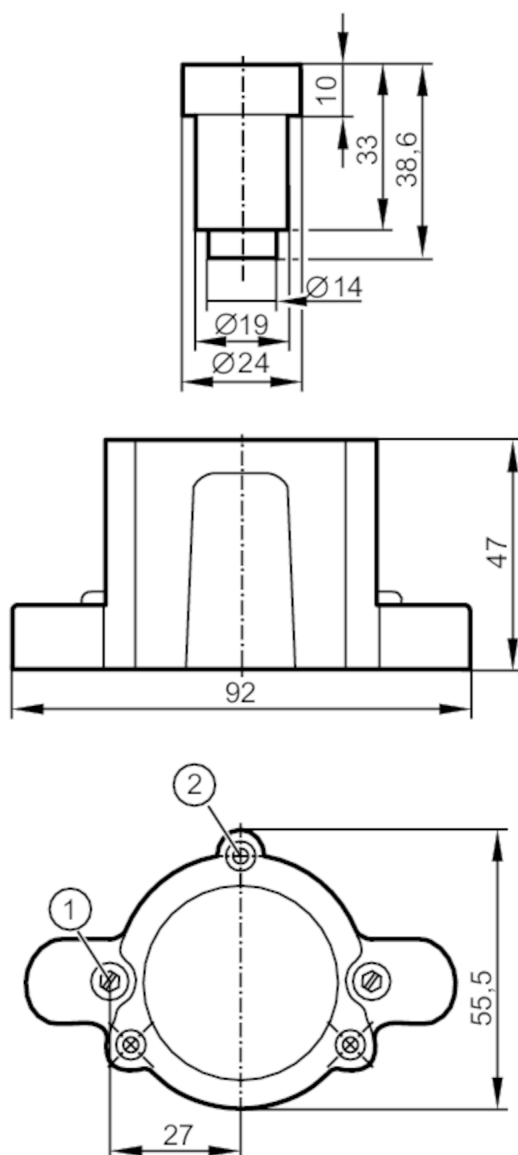


# Mounting adapter for position sensors used on rising stem valves

VALVIS ADAPTER 19



- 1 socket head screw to fix the target on the valve piston
- 2 head cap screw M4 to fix the adapter on the valve
- 3 threaded hole M4 to fix the valve sensor on the adapter

## Application

Design for Alfa Laval valves Typ LKLA-T (Butterfly Valves)

## Mechanical data

Weight [g] 163.5

Materials Adapter: PA 6; Clamping device: stainless steel (304/1.4301); Target: stainless steel (316L/1.4404); screw: stainless steel (304/1.4301); Sealing: EPDM

## Remarks

Pack quantity 1 pcs.