

# AC5020



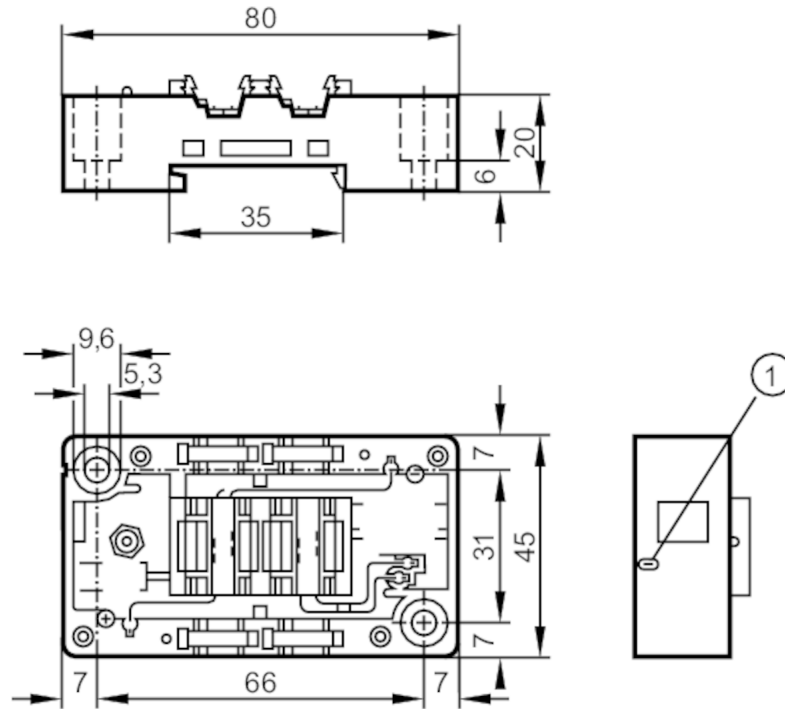
## Lower part for AS-Interface module

EMS-Base FC

Article no longer available - archive entry

Alternative articles: AC5000

When selecting an alternative article and accessories please note that technical data may differ!



1 earthing lead

### Electrical data

Operating voltage	[V]	26.5...31.6 DC
Additional voltage supply	[V]	24 DC

### Outputs

Electrical design	AS-i
Contact rating	< 2 A

### Operating conditions

Ambient temperature	[°C]	-25...85
Protection		IP 67; (depending on the upper part used: IP 20 / IP 65 / IP 67)

### Mechanical data

Type of mounting	mounting on DIN rail and panel	
Dimensions	[mm]	45 x 80 x 20
Materials	PBT	

### Remarks

Remarks	recommended sleeve for earthing lead: A 2.8 x 0.5 DIN 46247 Module lower part can be used with upper parts where pin 5 of the M12 socket is connected to functional earth (FE).
Pack quantity	1 pcs.

### Electrical connection

contact pins in module upper part :

# AC5020

## Lower part for AS-Interface module

EMS-Base FC



quick mounting technology for AS-i flat cable: