

AC1008



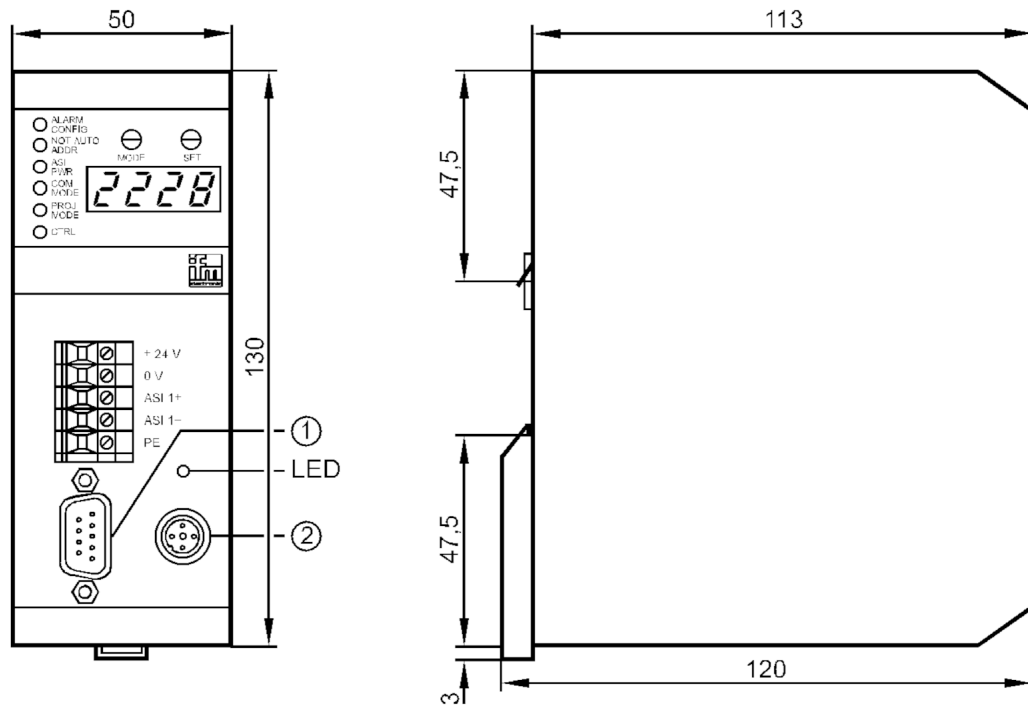
AS-Interface DeviceNet gateway with PLC

CONTR/1MSTR/1RS232C/1DN

Article no longer available - archive entry

Alternative articles: AC1318

When selecting an alternative article and accessories please note that technical data may differ!



- 1 Programming interface RS232C
- 2 DeviceNet interface



Application

Application use as minicontroller and gateway

Electrical data

Operating voltage	[V]	22...30 DC; (24 DC; to PELV)
Insulation rating	[V]	500
Max. current consumption from AS-i	[mA]	80
Max. power consumption	[VA]	10
Electrical separation		yes

Outputs

Electrical design AS-i

Interfaces

Communication interface RS232

RS232

Number of R232 interfaces	1
Transmission rate	4800...62400 Baud
Connector type	SUB-D
Usage type	programming

AC1008



AS-Interface DeviceNet gateway with PLC

CONTR/1MSTR/1RS232C/1DN

Operating conditions		
Ambient temperature	[°C]	0...60
Storage temperature	[°C]	-20...70
Max. relative air humidity	[%]	95
Protection		IP 20

AS-i classification		
AS-i profile		M1
AS-i certificate		22504

Mechanical data		
Housing		housing for DIN rail mounting
Materials		aluminium

Displays / operating elements		
Display	function check	2 x LED, red
		2 x LED, green
		2 x LED, yellow

Remarks		
Pack quantity		1 pcs.

Electrical connection		
screw terminals: 5 x		

Connection

