

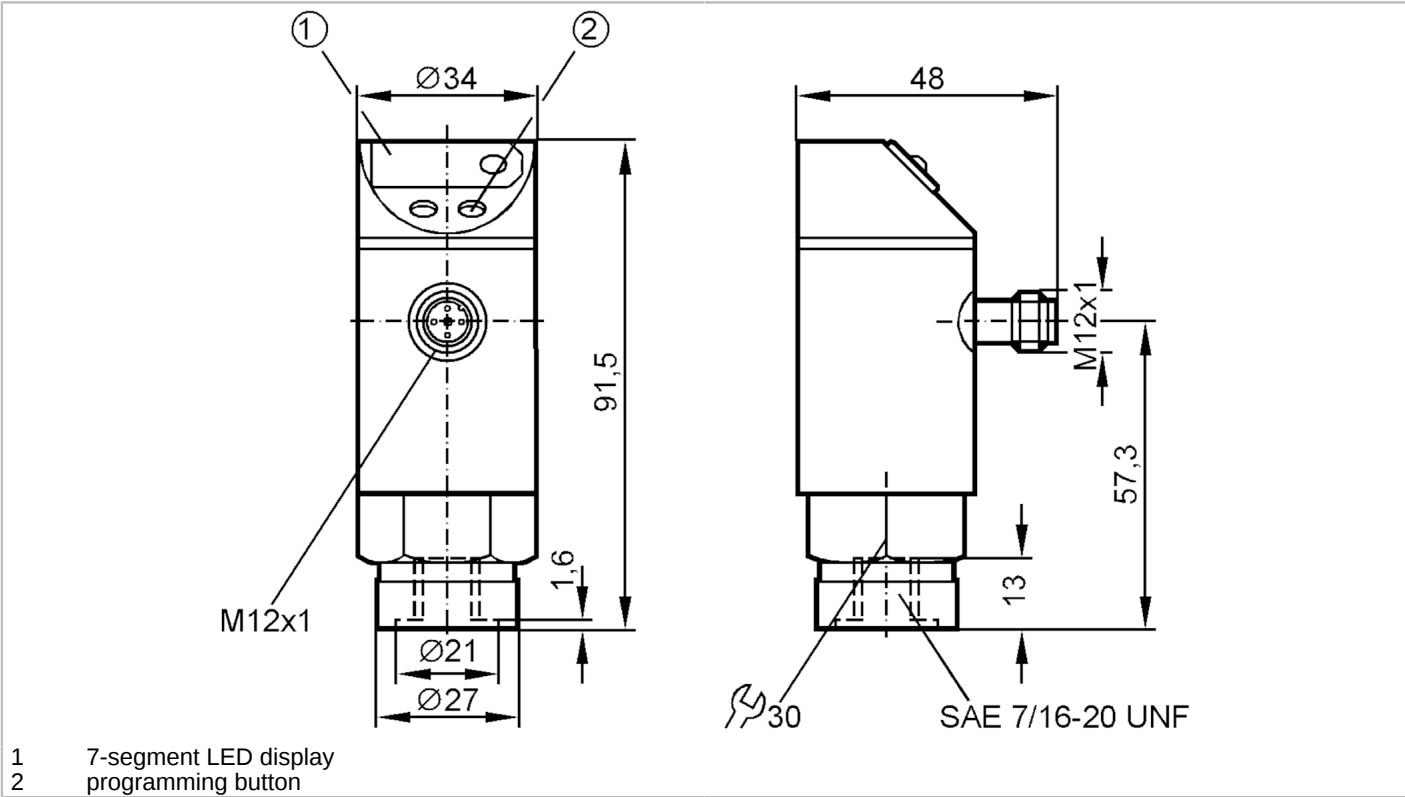


Pressure sensor with display

PN-100PSBU76-KFPKG/US/ IV

Article no longer available - archive entry

Alternative articles: PN3002 + E30087
When selecting an alternative article and accessories please note that technical data may differ!



Product characteristics	
Number of inputs and outputs	Number of digital outputs: 1; Number of analogue outputs: 1
Measuring range [psi]	0...1000
Process connection	threaded connection 7/16" - 20 UNF internal thread
Application	
Application	for industrial applications
Media	liquids and gases
Conditionally suitable for	For gaseous media the application is limited to max. 25 bar.
Medium temperature [°C]	-25...80
Min. bursting pressure [psi]	9000
Pressure rating [psi]	4500
Type of pressure	relative pressure
Electrical data	
Operating voltage [V]	20...30 DC
Current consumption [mA]	< 60
Reverse polarity protection	yes
Inputs / outputs	
Number of inputs and outputs	Number of digital outputs: 1; Number of analogue outputs: 1



Pressure sensor with display

PN-100PSBU76-KFPKG/US/ IV

Outputs									
Total number of outputs		2							
Output signal		switching signal; analogue signal; (configurable)							
Electrical design		PNP							
Number of digital outputs		1							
Max. voltage drop switching output DC [V]		2							
Permanent current rating of switching output DC [mA]		250							
Number of analogue outputs		1							
Analogue current output [mA]		4...20							
Max. load [Ω]		500							
Short-circuit protection		yes							
Type of short-circuit protection		pulsed							
Overload protection		yes							
Measuring/setting range									
Measuring range [psi]		0...1000							
Set point SP [psi]		50...1000							
Reset point rP [psi]		30...980							
In steps of [psi]		10							
Accuracy / deviations									
Switch point accuracy [% of the final value]		< ± 2,0							
Repeatability [% of the final value]		< ± 0,25; (with temperature fluctuations < 10 K)							
Characteristics deviation [% of the final value]		< ± 2,0							
Temperature drift per 10 K		< ± 0.3							
Response times									
Switching frequency for a given set response time of one output		Response[ms] time (dAP)	15	20	30	50	90	170	330
		Switching [Hz] frequency	50	35	30	20	15	9	5
Response time [ms]		at rectangular pressure characteristic; switch point (SPx) = 70 %; reset point (rPx) = 30 %							
Delay time programmable dS, dr [s]		0, 0,2, 0,4,...3							
Software / programming									
Adjustment of the switch point		programming button							
Operating conditions									
Ambient temperature [°C]		-25...80							
Storage temperature [°C]		-40...100							
Protection		IP 67							

PN8322



Pressure sensor with display

PN-100PSBU76-KFPKG/US/ IV

Tests / approvals

EMC	IEC 801/2 ESD	4 kV CD / 8 kV AD
	IEC 801/3 HF	10 V/m
	IEC 801/4 Burst	2 kV

Mechanical data

Materials	brass nickel-plated; PBT; PC; PA
Materials (wetted parts)	brass nickel-plated; ceramics; FKM; NBR; EPDM/X
Min. pressure cycles	100 million
Process connection	threaded connection 7/16" - 20 UNF internal thread

Displays / operating elements

Display	switching status	LED, red
	function display	7-segment LED display
	measured values	7-segment LED display

Remarks

Pack quantity	1 pcs.
---------------	--------

Electrical connection

Connector: 1 x M12; coding: A



Connection

