

PB6000



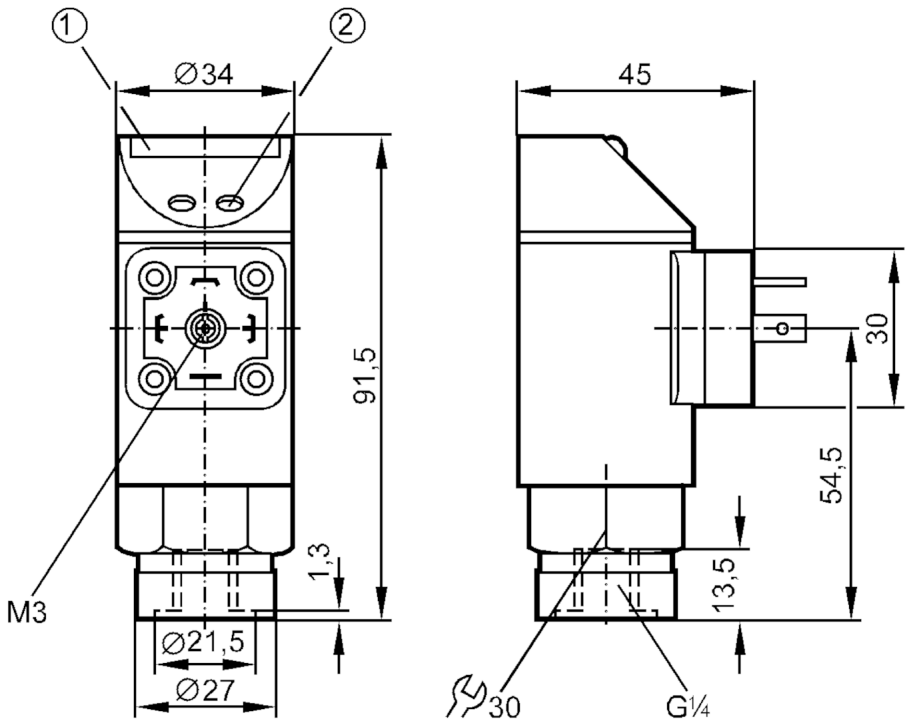
Pressure sensor with LED bar display

PB-400-SBR14-FFPKG/SS/ IV

Article no longer available - archive entry

Alternative articles: PN5000

When selecting an alternative article and accessories please note that technical data may differ!



- 1 LED bar display
- 2 programming button



Product characteristics

| | |
|------------------------------|---|
| Number of inputs and outputs | Number of digital outputs: 1 |
| Measuring range [bar] | 0...400 |
| Process connection | threaded connection G 1/4 internal thread |

Application

| | |
|------------------------------|--|
| Application | for industrial applications |
| Media | liquids and gases |
| Conditionally suitable for | For gaseous media the application is limited to max. 25 bar. |
| Medium temperature [°C] | -25...80 |
| Min. bursting pressure [bar] | 1000 |
| Pressure rating [bar] | 600 |
| Type of pressure | relative pressure |



Pressure sensor with LED bar display

PB-400-SBR14-FFPKG/SS/ IV

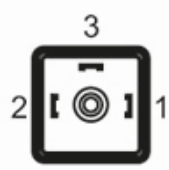
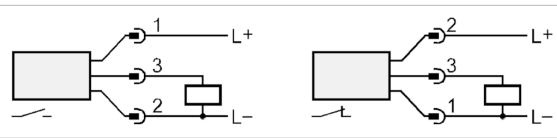
| Electrical data | | |
|---|-------|--|
| Operating voltage | [V] | 18...30 DC |
| Current consumption | [mA] | < 50 |
| Min. insulation resistance | [MΩ] | 100; (500 V DC) |
| Protection class | | III |
| Reverse polarity protection | | yes |
| Power-on delay time | [s] | 0.2 |
| Integrated watchdog | | yes |
| Inputs / outputs | | |
| Number of inputs and outputs | | Number of digital outputs: 1 |
| Outputs | | |
| Total number of outputs | | 1 |
| Output signal | | switching signal |
| Electrical design | | PNP |
| Number of digital outputs | | 1 |
| Output function | | normally open / normally closed; (parameterisable) |
| Max. voltage drop switching output DC | [V] | 2 |
| Permanent current rating of switching output DC | [mA] | 250 |
| Switching frequency DC | [Hz] | 5 |
| Short-circuit protection | | yes |
| Type of short-circuit protection | | pulsed |
| Overload protection | | yes |
| Measuring/setting range | | |
| Measuring range | [bar] | 0...400 |
| Set point SP | [bar] | 20...400 |
| Reset point rP | [bar] | 12...392 |
| In steps of | [bar] | 4 |
| Accuracy / deviations | | |
| Switch point accuracy [% of the final value] | | < ± 2,0 |
| Repeatability [% of the final value] | | < ± 0,25; (with temperature fluctuations < 10 K) |
| Temperature drift per 10 K | | < ± 0.3 |
| Software / programming | | |
| Adjustment of the switch point | | programming button |
| Operating conditions | | |
| Ambient temperature | [°C] | -25...80 |
| Storage temperature | [°C] | -40...100 |
| Protection | | IP 65 |

PB6000



Pressure sensor with LED bar display

PB-400-SBR14-FFPKG/SS/ IV

| Tests / approvals | | |
|---|---|---|
| EMC | EN 61000-4-2 ESD | 4 kV CD / 8 kV AD |
| | EN 61000-4-3 HF radiated | 10 V/m |
| | EN 61000-4-4 Burst | 2 kV |
| | EN 61000-4-6 HF conducted | 10 V |
| Shock resistance | DIN IEC 68-2-27 | 50 g (11 ms) |
| Vibration resistance | DIN IEC 68-2-6 | 20 g (10...2000 Hz) |
| Mechanical data | | |
| Materials | EPDM/X; FKM; NBR; PA; PBT; PC; stainless steel (304/1.4301) | |
| Materials (wetted parts) | FKM; ceramics; stainless steel (303/1.4305) | |
| Min. pressure cycles | 100 million | |
| Process connection | threaded connection G 1/4 internal thread | |
| Displays / operating elements | | |
| Display | switching status | LED, yellow |
| | measured values | 10 x LED, green Resolution 10% of the final value |
| Remarks | | |
| Pack quantity | 1 pcs. | |
| Electrical connection | | |
| Connector: 1 x valve type A DIN (DIN EN 175301-803) | | |
| <div></div> | | |
| <div></div> | | |