

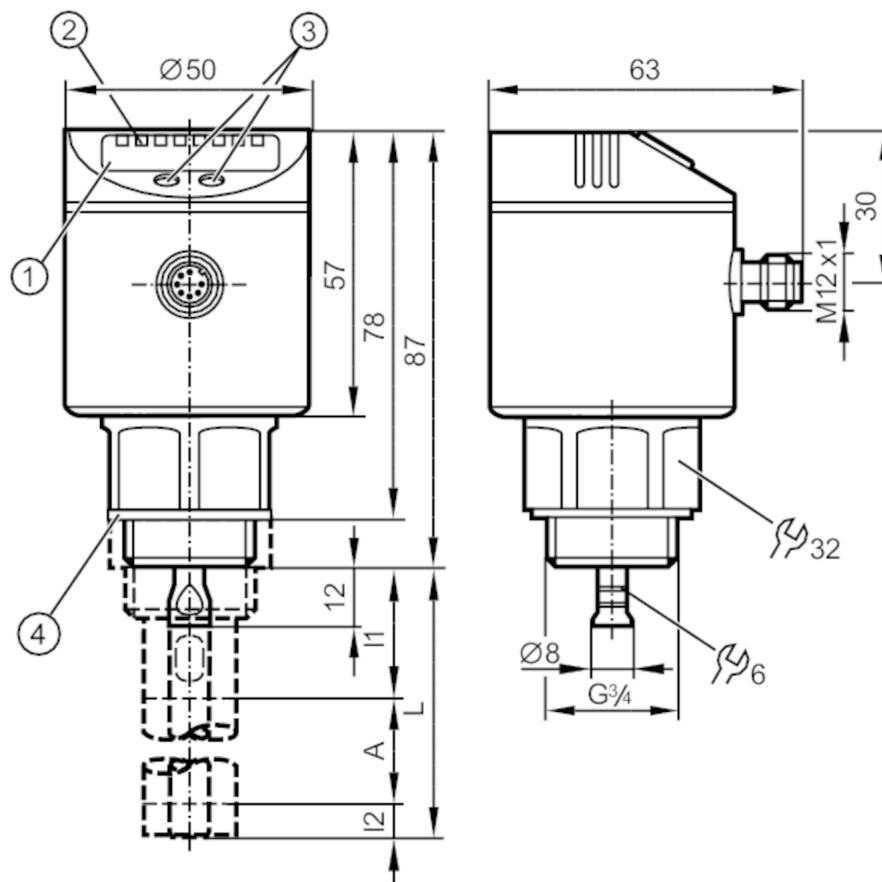


## Continuous level sensor (guided wave radar)

LR0000B-BR34ASPKG/US

For 8-pole sockets the core colours are not standardised.

Please note the wiring of the sensor and the sockets (see data sheet).



- 1 alphanumeric display 4-digit
- 2 LEDs Display unit / switching status
- 3 programming buttons
- 4 Sealing
- A active range
- I1 / I2 inactive ranges



### Product characteristics

Number of inputs and outputs	Number of digital outputs: 4
Probe length L [mm]	100...1600
Process connection	G 3/4 external thread

### Application

Special feature	Gold-plated contacts
Media	Liquids
Dielectric constant of the medium	≥ 1,8; (for media with a dielectric constant of 1.8...5 (e.g. oils), a coaxial pipe is needed for operation)
Recommended media	water; hydrous media; oils; oil-based media
Cannot be used for	See the operating instructions, chapter "Function and features".
Medium temperature [°C]	-25...80; (90 < 1 h)
Tank pressure [bar]	-1...16



## Continuous level sensor (guided wave radar)

LR0000B-BR34ASPKG/US

MAWP (for applications according to CRN)	[bar]	25
<b>Electrical data</b>		
Operating voltage	[V]	18...30 DC
Current consumption	[mA]	< 80
Protection class		III
Reverse polarity protection		yes
Power-on delay time	[s]	< 3
Measuring principle		guided wave radar
<b>Inputs / outputs</b>		
Number of inputs and outputs		Number of digital outputs: 4
<b>Outputs</b>		
Total number of outputs		4
Output signal		switching signal; IO-Link
Electrical design		PNP
Number of digital outputs		4
Output function		normally open / normally closed; (parameterisable)
Max. voltage drop switching output DC	[V]	2.5
Permanent current rating of switching output DC	[mA]	200
Short-circuit protection		yes
Type of short-circuit protection		thermal, pulsed
<b>Measuring/setting range</b>		
Probe length L	[mm]	100...1600
Active range A	[mm]	L-40; (when set to oil and oil based media: L-60)
Inactive range I1 / I2	[mm]	30 / 10; (when set to oil and oil based media: 30 / 30)
Sampling rate	[Hz]	4
<b>Setting range</b>		
Set point SP	[mm]	15...L-30
Note on setpoint SP		when set to oil and oil based media: 35...L-30
Reset point rP	[mm]	10... L-35
Note on reset point rP		when set to oil and oil based media
In steps of	[mm]	5
Hysteresis	[mm]	> 5
<b>Accuracy / deviations</b>		
Repeatability	[mm]	± 5
Measuring error	[mm]	± 7
Offset error	[mm]	5
Resolution	[mm]	1
<b>Interfaces</b>		
Communication interface		IO-Link
Transmission type		COM2 (38,4 kBaud)
IO-Link revision		1.1



## Continuous level sensor (guided wave radar)

LR0000B-BR34ASPKG/US

SDCI standard	IEC 61131-9 CDV	
Profiles	no profile	
SIO mode	yes	
Required master port type	A	
Process data analogue	1	
Process data binary	4	
Min. process cycle time [ms]	2.3	
Supported DeviceIDs	<b>Type of operation</b>	<b>DeviceID</b>
	default	10

Operating conditions		
Ambient temperature [°C]	-25...60	
Storage temperature [°C]	-40...85	
Protection	IP 67	

Tests / approvals		
EMC	IEC 60947-1	
Shock resistance	DIN IEC 68-2-27	50 g (11 ms)
Vibration resistance	DIN IEC 68-2-6	5 g (10...2000 Hz)
MTTF [years]	205	

Mechanical data		
Weight [g]	380.45	
Materials	stainless steel (1.4301 / 304); FKM; PBT; PC; PEI; TPE-V; PTFE	
Materials (wetted parts)	stainless steel (1.4305 / 303); probe connection: stainless steel (316L/1.4435); PTFE; FKM; Sealing: NBR-PPTA 20	
Process connection	G 3/4 external thread	

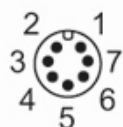
Displays / operating elements		
Display	Display unit	3 x LED, green
	switching status	4 x LED, yellow
	level	alphanumeric display, 4-digit
	parameter setting	alphanumeric display, 4-digit

Accessories		
Accessories (optional)	Probe:, E43203...E43205 / E43207...E43210	
	Coaxial pipe:, E43211...E43221, E43223, E43224	

Remarks		
Pack quantity	1 pcs.	

Electrical connection		
-----------------------	--	--

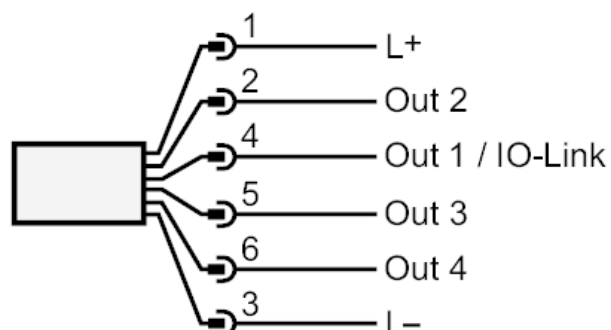
Connector: 1 x M12; coding: A; Contacts: gold-plated



## Continuous level sensor (guided wave radar)

LR0000B-BR34ASPKG/US

### Connection



### Diagrams and graphs

Measurement deviation D at the limits of the active rod range

