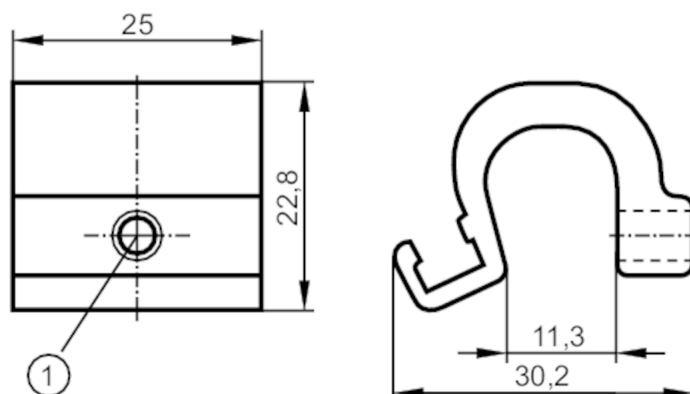


## Mounting adapter for tie-rod/integrated profile cylinders

ADAPT TIE ROD/PROFILE CYL



1 Mounting screw SW 2.5

### Application

Design

for types MKT

### Mechanical data

Weight

[g]

17.8

Dimensions

[mm]

22.8 x 25 x 30.2

Materials

Adapter: aluminium; screw: stainless steel

Clamping range

[mm]

5...11

### Remarks

Pack quantity

1 pcs.