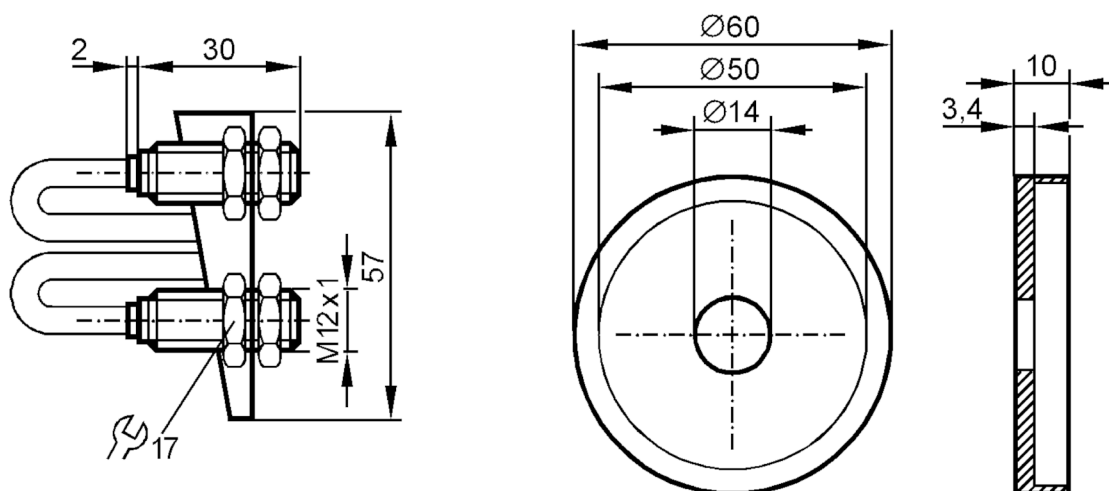


## Inductive sensor

IF-04-N SS-D-L

Article no longer available - archive entry



## Product characteristics

Output function		normally closed
Sensing range	[mm]	4
Housing		threaded type
Dimensions	[mm]	M12 x 1

## Application

Application		not for use in hazardous areas (not ATEX approved)
Installation		for valves; (76...101,6 (NW 80...100))

## Electrical data

Connection to switching amplifiers		yes
Switching amplifiers		connection to switching amplifiers according to EN 60947-5-6
Nominal voltage DC	[V]	8.2; (1k $\Omega$ )
Supply voltage DC	[V]	7.5...30
Current consumption	[mA]	undamped: > 2,1; damped: < 1; per sensor
Protection class		III

## Outputs

Output function		normally closed
Permanent current rating of switching output DC	[mA]	30; (per sensor)
Switching frequency DC	[Hz]	1500

## Detection zone


Sensing range	[mm]	4
---------------	------	---

# IF7034



## Inductive sensor

IF-04-N SS-D-L

Operating conditions		
Ambient temperature	[°C]	-20...70
Protection		IP 65
Tests / approvals		
EMC	EN 60947-5-2	
	EN 55011	class B
Mechanical data		
Weight	[g]	0.001
Housing		threaded type
Mounting		non-flush mountable
Dimensions	[mm]	M12 x 1
Thread designation		M12 x 1
Materials		PBT; Target: stainless steel (304/1.4301)
Accessories		
Items supplied		lock nuts: 2
		Target
Remarks		
Remarks		Note:
		The sensors are adjusted with the enclosed target flag.
		If an older type of target flag is used, there is a risk of mechanical damage to the sensor if they are not adjusted properly.
Pack quantity		1 pcs.
Electrical connection - plug		
Connector: 1 x valve plug type A DIN (DIN EN 175301-803)		
		

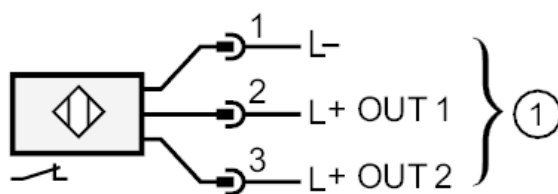
# IF7034



## Inductive sensor

IF-04-N SS-D-L

### Connection



1	Connection to switching amplifiers
1-2	High, out1
1-3	Low, out 2