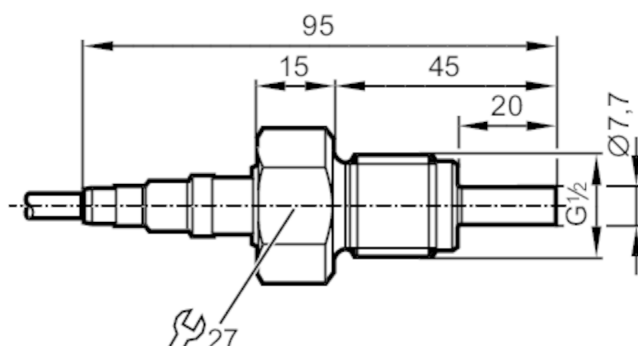


SP321A



Flow sensor for connection to an evaluation unit

SPR12ABB/2G/6M



Product characteristics

Process connection	G 1/2 external thread
--------------------	-----------------------

Application

Media	Liquids; Gases
Medium temperature [°C]	-20...70
Pressure rating [bar]	30

Liquids

Medium temperature [°C]	-20...70
-------------------------	----------

Gases

Medium temperature [°C]	-20...70
-------------------------	----------

Electrical data

Connection to control monitor	VS4000
-------------------------------	--------

Measuring/setting range

Liquids

Setting range [cm/s]	3...300
Greatest sensitivity [cm/s]	3...100

Gases

Setting range [cm/s]	100...15000
Greatest sensitivity [cm/s]	100...7500

Accuracy / deviations

Temperature gradient [K/min]	30
------------------------------	----

Response times

Response time [s]	1...10
-------------------	--------

Liquids

Response time [s]	1...10
-------------------	--------

Gases

Response time [s]	1...10
-------------------	--------

Operating conditions


Ambient temperature [°C]	-20...70
Protection	IP 65; IP 67

SP321A



Flow sensor for connection to an evaluation unit

SPR12ABB/2G/6M

Tests / approvals		
Approval	CSANe 21ATEX2239; IECEx CSA 21.0045	
ATEX marking	 II 2G Ex ia IIC T4 Gb	
Shock resistance	DIN IEC 68-2-27	40 g (11 ms)
Vibration resistance	DIN IEC 68-2-6	10 g (55...2000 Hz)
MTTF	[years]	8519

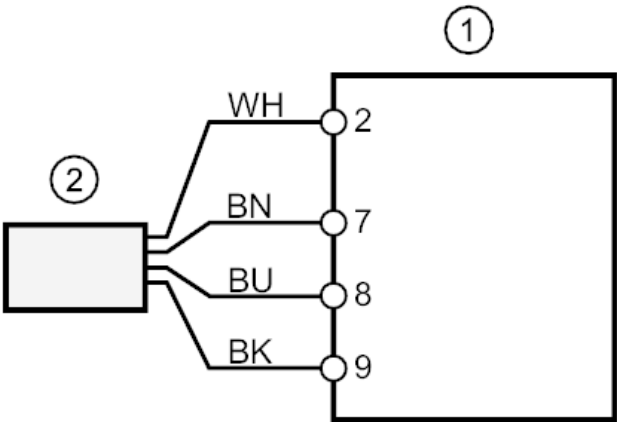
Mechanical data		
Weight	[g]	367.5
Housing	threaded type	
Materials	stainless steel (316L/1.4404)	
Materials (wetted parts)	stainless steel (316L/1.4404)	
Process connection	G 1/2 external thread	

Remarks		
Remarks	In principle, the type test according to 2014/34/EU (ATEX) only takes atmospheric conditions into account (0.8...1.1 bar). For pressures outside this range use must be assessed and approved by the user. Adhere to the operating instructions and the type test certificate.	
Pack quantity	1 pcs.	

Electrical connection

Cable: 6 m, TPE-S; Maximum cable length: 100 m; (4 x 0.5 mm²); 4 x 0.34 mm²

Connection



- 1

2
- SR307A / VS4000

SP321A

Core colours :

BK = black

BN = brown

BU = blue

WH = white