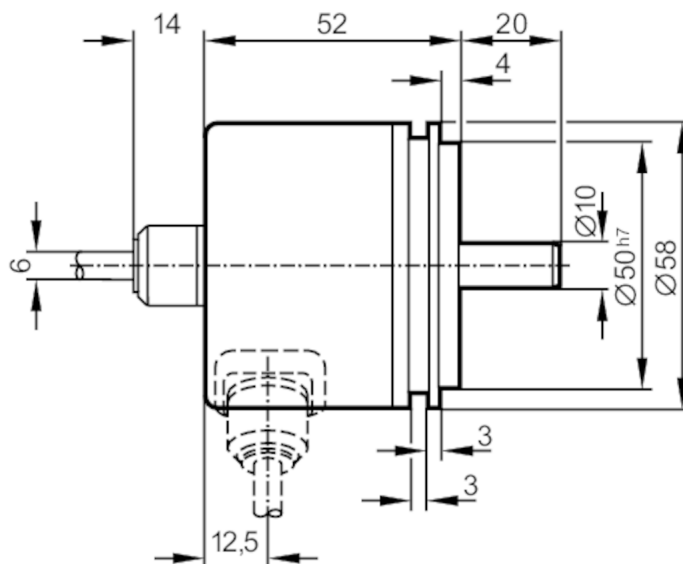
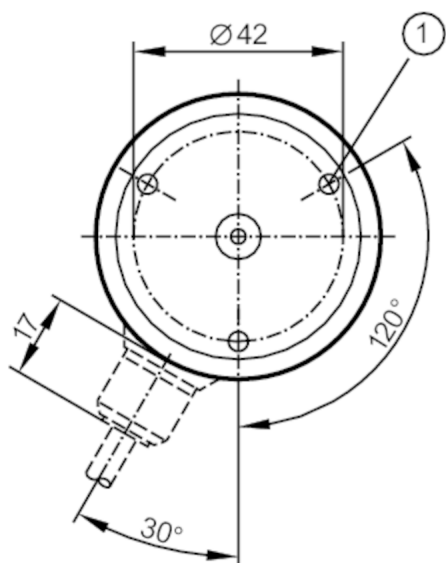




Absolute singleturn encoder with solid shaft

RN-0360-G24/L3B

Article no longer available - archive entry



1 M4 Depth 5 mm



Product characteristics

| | |
|---------------------|------------------|
| Resolution | 360 steps; 9 bit |
| Shaft design | solid shaft |
| Shaft diameter [mm] | 10 |

Electrical data

| | |
|------------------------------------|------------|
| Operating voltage [V] | 10...30 DC |
| Current consumption [mA] | < 250 |
| Max. revolution electrical [U/min] | 1500 |

Outputs

| | |
|-----------------------------------|---|
| Electrical design | HTL |
| Max. current load per output [mA] | 20 |
| Code | Gray code; (increasing code values when turned clockwise (seen on the shaft)) |

Measuring/setting range

| | |
|------------|------------------|
| Resolution | 360 steps; 9 bit |
|------------|------------------|

Operating conditions

| | |
|--------------------------------|-----------|
| Ambient temperature [°C] | -20...70 |
| Storage temperature [°C] | -30...100 |
| Max. relative air humidity [%] | 98 |
| Protection | IP 65 |

Tests / approvals

| | |
|----------------------|---------------------|
| Shock resistance | 100 g (6 ms) |
| Vibration resistance | 10 g (55...2000 Hz) |



Absolute singleturn encoder with solid shaft

RN-0360-G24/L3B

| Mechanical data | | |
|---|---------|----------------|
| Dimensions | [mm] | Ø 58 / L = 52 |
| Materials | | aluminium |
| Max. revolution, mechanical | [U/min] | 10000 |
| Max. starting torque | [Nm] | 1 |
| Reference temperature torque | [°C] | 20 |
| Shaft design | | solid shaft |
| Shaft diameter | [mm] | 10 |
| Shaft material | | steel (1.4104) |
| Max. shaft load axial (at the shaft end) | [N] | 10 |
| Max. shaft load radial (at the shaft end) | [N] | 20 |

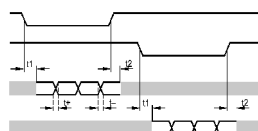
Electrical connection

Cable: 3 m, PUR; Maximum cable length: 100 m; axial

| | |
|--------------|----------------------------|
| brown | 10...30V |
| yellow/brown | 10...30V sensor |
| white | 0V |
| white/yellow | 0V sensor |
| green | release A inverted 5...30V |
| yellow | release B inverted 5...30V |
| white/grey | bit 8 (MSB) inverted |
| brown/green | bit 8 (MSB) |
| white/green | bit 7 |
| red/blue | bit 6 |
| grey/pink | bit 5 |
| lilac | bit 4 |
| black | bit 3 |
| red | bit 2 |
| blue | bit 1 |
| Screen | housing |

Diagrams and graphs

Pulse diagram



release A inverted
release B inverted
tracks 7...12
tracks 1...6