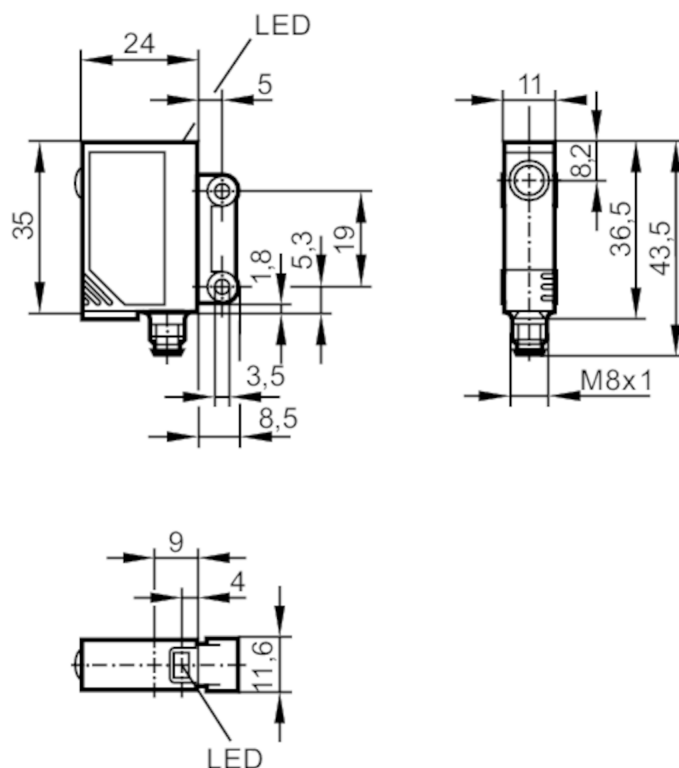


Through-beam sensor transmitter

OJS-00KG/SO/AS



Product characteristics

Type of light	red light
Housing	rectangular

Application

Function principle	Through-beam sensor
--------------------	---------------------

Electrical data

Operating voltage	[V]	10...30 DC
Current consumption	[mA]	< 30
Protection class		III
Reverse polarity protection		yes
Type of light		red light

Detection zone

Transmitter / receiver		transmitter
Range	[m]	0...10
Range adjustable		no
Max. light spot diameter	[mm]	1000
Light spot dimensions refer to		at maximum range

Operating conditions

Ambient temperature	[°C]	-25...60
Protection		IP 67



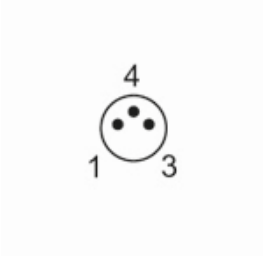
Through-beam sensor transmitter

OJS-00KG/SO/AS

Tests / approvals		
EMC	EN 60947-5-2	
MTTF	[years]	2230
Mechanical data		
Weight	[g]	16.6
Housing		rectangular
Dimensions	[mm]	35 x 11 x 24
Materials		ABS; SEPS
Lens material		PMMA
Lens alignment		side lens
Displays / operating elements		
Display	operation	1 x LED, green
Remarks		
Remarks	operating voltage "supply class 2" according to cULus	
Pack quantity	1 pcs.	

Electrical connection

Connector: 1 x M8; coding: A



Connection

