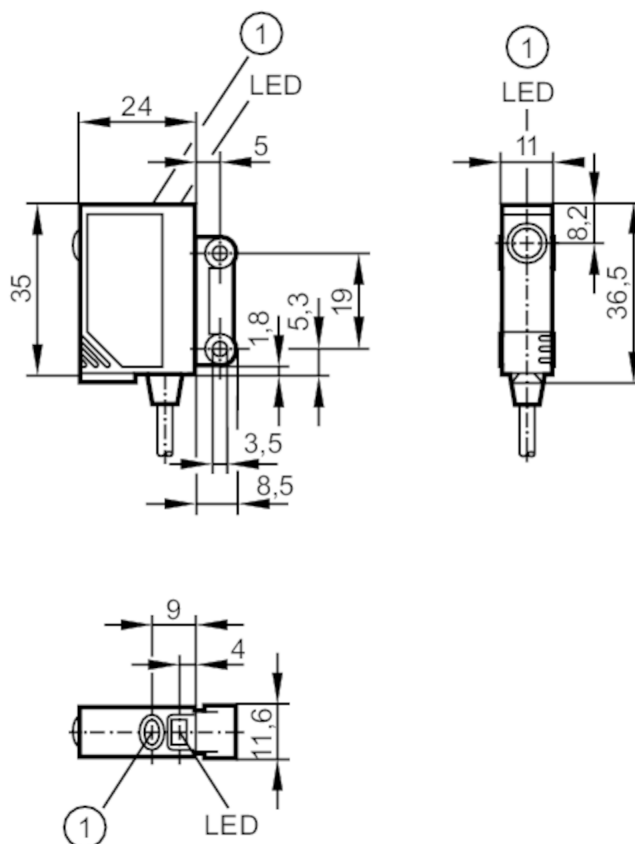




## Through-beam sensor receiver

OJE-FPKG/SO

Article no longer available - archive entry



1 pushbutton

## Product characteristics

Housing	rectangular
---------	-------------

## Application

Function principle	Through-beam sensor
--------------------	---------------------

## Electrical data

Operating voltage	[V]	10...30 DC
Current consumption	[mA]	< 12
Protection class		II
Reverse polarity protection		yes

## Outputs

Electrical design		PNP
Output function		light-on/dark-on mode; (parameterisable)
Max. voltage drop switching output DC	[V]	2.5
Permanent current rating of switching output DC	[mA]	200
Switching frequency DC	[Hz]	1200
Short-circuit protection		yes
Type of short-circuit protection		pulsed



## Through-beam sensor receiver

OJE-FPKG/SO

Overload protection	yes	
Detection zone		
Transmitter / receiver	receiver	
Range [m]	< 10	
Range adjustable	yes	
Operating conditions		
Ambient temperature [°C]	-25...60	
Protection	IP 67	
Tests / approvals		
EMC	EN 60947-5-2	
Mechanical data		
Housing	rectangular	
Dimensions [mm]	35 x 11 x 24	
Materials	housing: ABS; LED window: SEPS; pushbutton: SEPS	
Lens material	glass	
Lens alignment	side lens	
Displays / operating elements		
Display	switching status	1 x LED, yellow
	operation	1 x LED, green
	function	1 x LED, red
Electronic lock	yes	
Accessories		
Items supplied	screws: 2	
	spring washers: 2	
	Nuts: 2	
Remarks		
Remarks	operating voltage "supply class 2" according to cULus	
Pack quantity	1 pcs.	



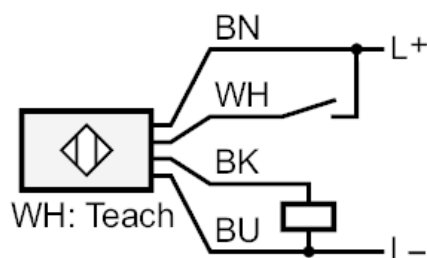
## Through-beam sensor receiver

OJE-FPKG/SO

### Electrical connection

Cable: 2 m, PVC; 4 x 0.14 mm<sup>2</sup>

### Connection



	Core colours :
BK =	black
BN =	brown
BU =	blue
WH =	white

### Diagrams and graphs

excess gain graph

